



## Sicklesmere Road, Bury St Edmunds, Suffolk, IP33 2BW

Rent - £1,150

Deposit - £1,326

A 2 bedroom terraced house located on the Southern outskirts of town, accessible to A14 and Sudbury. The house has a garage to the rear plus a parking space. Internally there is a lounge and kitchen/diner to the ground floor and 2 bedrooms and a bathroom to the first floor.

The house has the benefit of gas central heating and some new carpets and flooring.

Available immediately, contact us now to book your viewing!

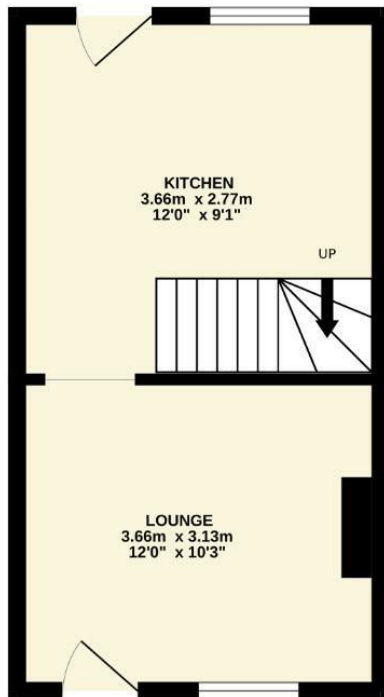
- 2 BEDROOM HOUSE ON OUTSKIRTS OF TOWN
- GAS RADIATOR HEATING
- ENCLOSED REAR GARDEN
- KITCHEN/DINING ROOM
- CONTACT US NOW TO BOOK YOUR VIEWING
- GARAGE AND PARKING FOR 1 CAR TO THE REAR
- FIRST FLOOR BATHROOM/WC
- LOUNGE
- SOME NEW FLOORING AND CARPETS
- AVAILABLE IMMEDIATELY



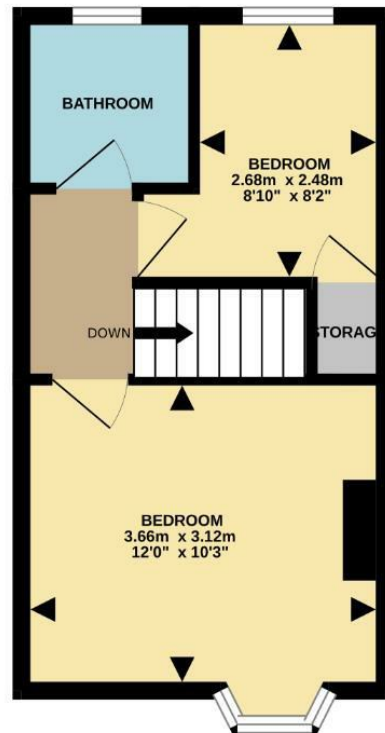
Council Tax Band: B - EPC Rating: D 65



GROUND FLOOR  
24.5 sq.m. (264 sq.ft.) approx.



1ST FLOOR  
24.8 sq.m. (267 sq.ft.) approx.



TOTAL FLOOR AREA : 49.3 sq.m. (531 sq.ft.) approx.

Whilst every attempt has been made to ensure the accuracy of the floorplan contained here, measurements of doors, windows, rooms and any other items are approximate and no responsibility is taken for any error, omission or mis-statement. This plan is for illustrative purposes only and should be used as such by any prospective purchaser. The services, systems and appliances shown have not been tested and no guarantee as to their operability or efficiency can be given.  
Made with Metreplex ©2005.

