



Waveney Road, Bury St. Edmunds, IP32 6JU

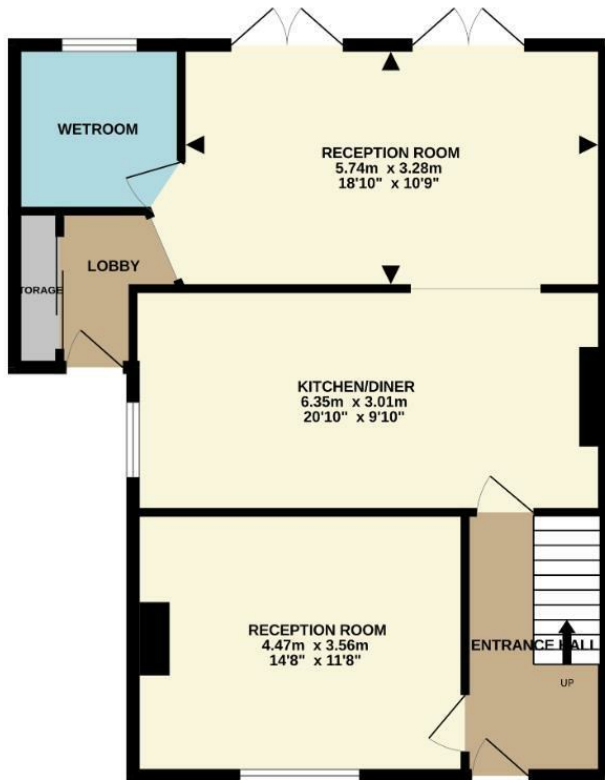
Rent - £1,500 Deposit - £1,730

Located on the Western outskirts of Bury St Edmunds is this extended 3 bedroom semi detached house with 2 large reception rooms and a kitchen/diner. The property has 3 well proportioned bedrooms, a ground floor wet room and a first floor family bathroom. Outside there is parking for at least 3 vehicles and a generous sized rear garden with outbuildings.

- EXTENDED 3 BEDROOM SEMI DETACHED HOUSE
- GROUND FLOOR WETROOM
- GENEROUS SIZED GARDEN WITH OUTBUILDINGS
- KITCHEN DINER
- PETS CONSIDERED ON A CASE BY CASE BASIS
- FIRST FLOOR BATHROOM/WC
- PARKING FOR 3 VEHICLES TO THE FRONT
- GAS RADIATOR HEATING & DOUBLE GLAZING
- 2 RECEPTION ROOMS
- CONTACT US NOW TO BOOK YOUR VIEWING



GROUND FLOOR
68.6 sq.m. (739 sq.ft.) approx.



1ST FLOOR
41.6 sq.m. (448 sq.ft.) approx.



TOTAL FLOOR AREA : 110.3 sq.m. (1187 sq.ft.) approx.

Whilst every attempt has been made to ensure the accuracy of the floorplan contained here, measurements of doors, windows, rooms and any other items are approximate and no responsibility is taken for any error, omission or mis-statement. This plan is for illustrative purposes only and should be used as such by any prospective purchaser. The services, systems and appliances shown have not been tested and no guarantee as to their operability or efficiency can be given.
Made with Metropix ©2025

