



## Trinity Mews, Bury St. Edmunds, Suffolk, IP33 3AT

**Rent - £1,000 PCM**

**Deposit - £1,153**

A well presented, modern first floor apartment located close to the town centre and the train station.

In the last couple of years the property has been renovated to include new carpets, new bathroom, new electric heaters and a new pressurised hot water tank. The property will be offered in newly decorated order. The accommodation offers Entrance Hall, Sitting/Dining Room, Kitchen with electric oven and hob and two Bedrooms, and modern Bathroom with shower over bath. The flat has an allocated parking space.

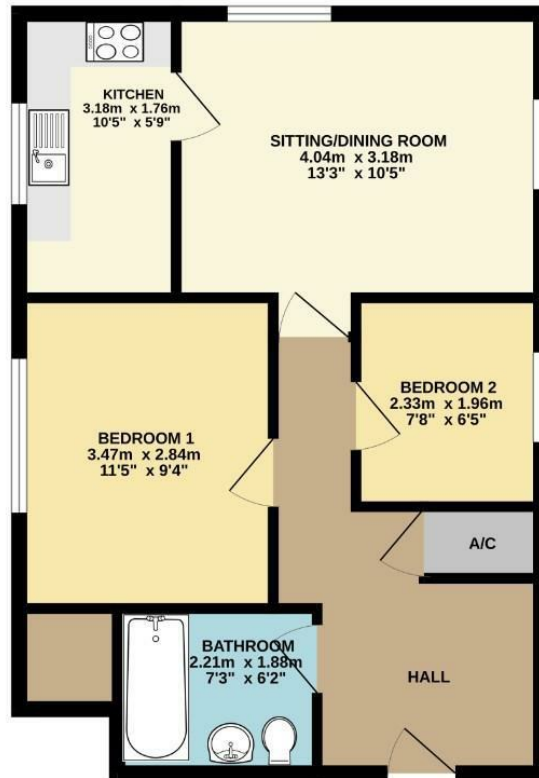
- SUPERB FIRST FLOOR APARTMENT
- RECENTLY REDECORATED,
- TWO BEDROOMS, MODERN BATHROOM
- ALLOCATED PARKING
- COUNCIL TAX BAND B
- REDECORATED ACCOMMODATION
- MODERN KITCHEN WITH ELECTRIC OVEN AND HOB
- MODERN CARPETS, ELECTRIC HEATERS AND PRESSURISED HOT WATER TANK
- UNFURNISHED, EPC TBC
- MINIMUM TERM TENANCY OF TWELVE MONTHS



Council Tax Band: B - EPC Rating: C 76



GROUND FLOOR  
48.8 sq.m. (525 sq.ft.) approx.



TOTAL FLOOR AREA: 48.8 sq.m. (525 sq.ft.) approx.

Whilst every attempt has been made to ensure the accuracy of the floorplan contained here, measurements of doors, windows, rooms and any other items are approximate and no responsibility is taken for any error, omission or misstatement. This plan is for illustrative purposes only and should be used as such by any prospective purchaser. The services, systems and appliances shown have not been tested and no guarantee as to their operability or efficiency can be given.  
Made well, Merseyside ©2025

