



## Rockingham Road, Bury St. Edmunds, Suffolk, IP33 2SA

Rent - £1,000 PCM      Deposit - £1,153

Excellent over the arch apartment in a desirable location off Southgate Street and therefore in a convenient location for access to the town and A14.

- APARTMENT OVER THE ARCH
- LOUNGE/ DINING ROOM/ KITCHEN
- STYLISH SHOWER ROOM
- UNFURNISHED, EPC 69. C
- GOOD LINKS TO RAF BASES
- DESIRABLE RESIDENTIAL LOCATION
- 1 BEDROOM
- GAS FIRED HEATING
- PARKING SPACE
- CONTACT NOW TO ARRANGE A VIEWING

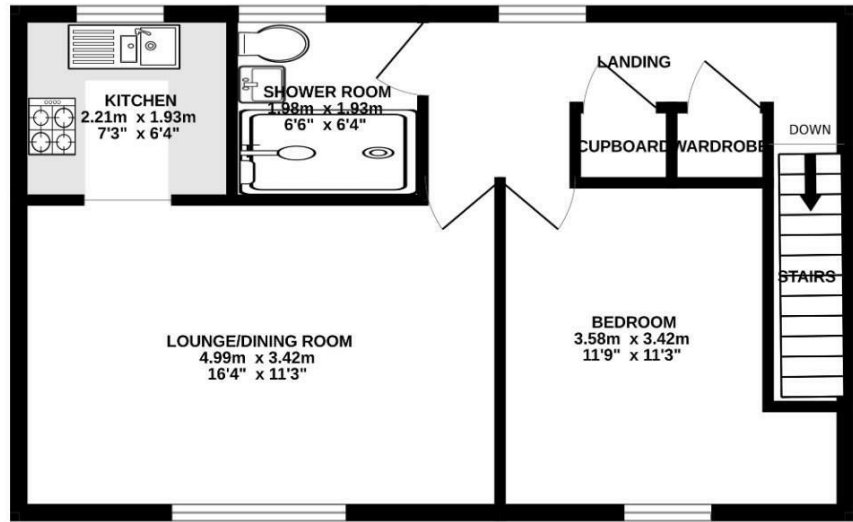


Council Tax Band: A - EPC Rating: C 74



GROUND FLOOR

1ST FLOOR



Whilst every attempt has been made to ensure the accuracy of the floorplan contained here, measurements of doors, windows, rooms and any other items are approximate and no responsibility is taken for any error, omission or mis-statement. This plan is for illustrative purposes only and should be used as such by any prospective purchaser. The services, systems and appliances shown have not been tested and no guarantee as to their operability or efficiency can be given.  
Made with Metropix ©2025

