



St Martins Street, Bury St Edmunds, Suffolk, IP33 1JL

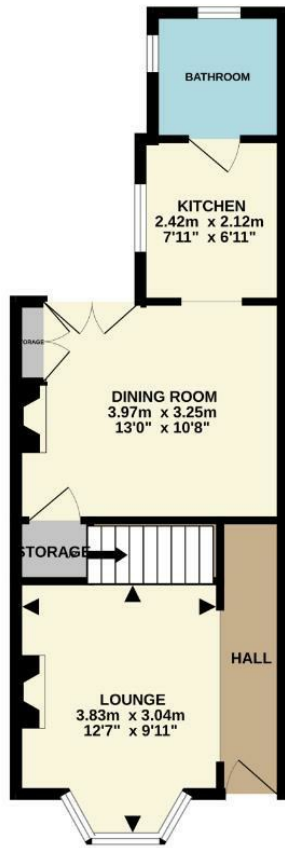
Rent - £1,300 Deposit - £1,500

A 2 double bedroom end of terrace house located in Bury St Edmunds town centre with the benefit of an ensuite shower room to the main bedroom and a ground floor bathroom. The house has 2 reception rooms, character features, a courtyard garden and integrated appliances in the fitted kitchen. Contact us now to book your viewing!

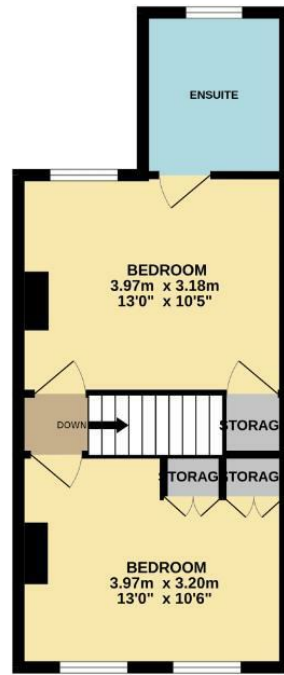
- 2 BEDROOM TOWN CENTRE HOUSE
- FURTHER DOUBLE BEDROOM
- COURTYARD STYLE GARDEN
- FITTED KITCHEN WITH INTEGRATED APPLIANCES
- AVAILABLE IMMEDIATELY
- EN SUITE TO MAIN BEDROOM & GROUND FLOOR BATHROOM
- GAS RADIATOR HEATING & NEW DOUBLE GLAZING TO MOST WINDOWS
- 2 RECEPTION ROOMS
- CHARACTER FIREPLACES AND FEATURES
- CONTACT US NOW TO BOOK YOUR VIEWING



GROUND FLOOR
37.9 sq.m. (408 sq.ft.) approx.



1ST FLOOR
33.5 sq.m. (361 sq.ft.) approx.



TOTAL FLOOR AREA: 71.4 sq.m. (769 sq.ft.) approx.
Whilst every attempt has been made to ensure the accuracy of the floorplan contained here, measurements of doors, windows, rooms and any other items are approximate and no responsibility is taken for any error, omission or mis-statement. This plan is for illustrative purposes only and should be used as such by any prospective purchaser. The services, systems and appliances shown have not been tested and no guarantee as to their operability or efficiency can be given.
Made with Metropix ©2025

