

15-17 Eastgate Street, Bury St Edmunds, Suffolk, IP33 1XX
Tel: 01284 760770
bury@shiresresidential.com
www.shiresresidential.com

shires

Estate & Letting Agents



Emsworth Close, Bury St. Edmunds, IP32 7LT

Rent - £1,300 PCM Deposit - £1,500

Nestled in the charming area of Emsworth Close, Bury St. Edmunds, this delightful end-terrace house offers a perfect blend of comfort and modern living. With a well-thought-out layout spanning approximately 657 square feet, this property features two inviting bedrooms and a stylish bathroom, making it an ideal choice for couples, small families, or those seeking a cosy retreat.

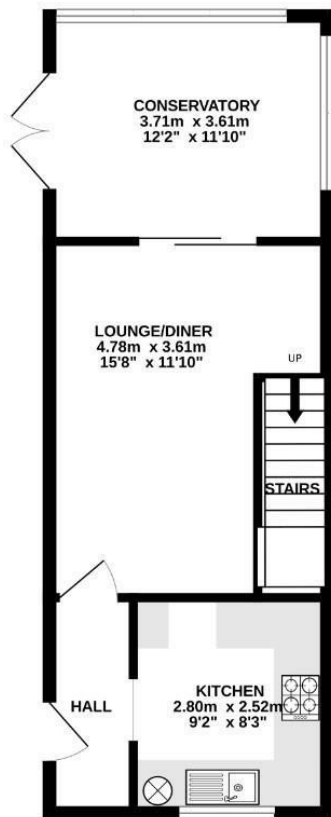
Having been refurbished throughout, the home boasts contemporary finishes and a fresh aesthetic, ensuring that it is ready for you to move in without the need for any immediate renovations. The reception room provides a

- 2 BEDROOMS
- REFURBISHED THROUGHOUT
- COUNCIL TAX BAND B
- AVAILABLE NOW
- GAS CENTRAL HEATING
- GREAT LINKS TO RAF BASES
- OFF ROAD PARKING
- GOOD LOCATION
- CLOSE TO TOWN
- CONTACT NOW TO ARRANGE A VIEWING

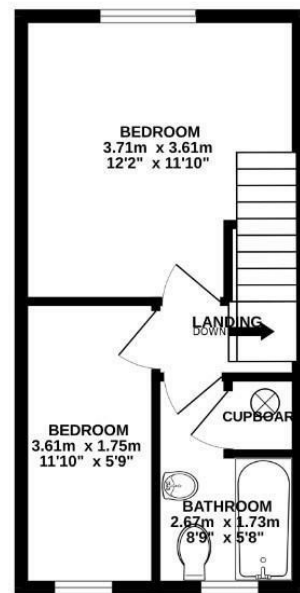


Council Tax Band: B - EPC Rating: D 64

GROUND FLOOR



1ST FLOOR



Whilst every attempt has been made to ensure the accuracy of the floorplan contained herein, measurements of doors, windows, rooms and any other items are approximate and no responsibility is taken for any error, omission or mis-statement. This plan is for illustrative purposes only and should be used as such by any prospective purchaser. The fixtures, systems and appliances shown have not been tested and no guarantee as to their operability or efficiency can be given.
Made with Metrepro 5.0/2025

