

15-17 Eastgate Street, Bury St Edmunds, Suffolk, IP33 1XX
Tel: 01284 760770
bury@shiresresidential.com
www.shiresresidential.com

shires

Estate & Letting Agents



Selway Drive, Bury St. Edmunds, IP32 7PL

Rent - £1,800 PCM Deposit - £2,076

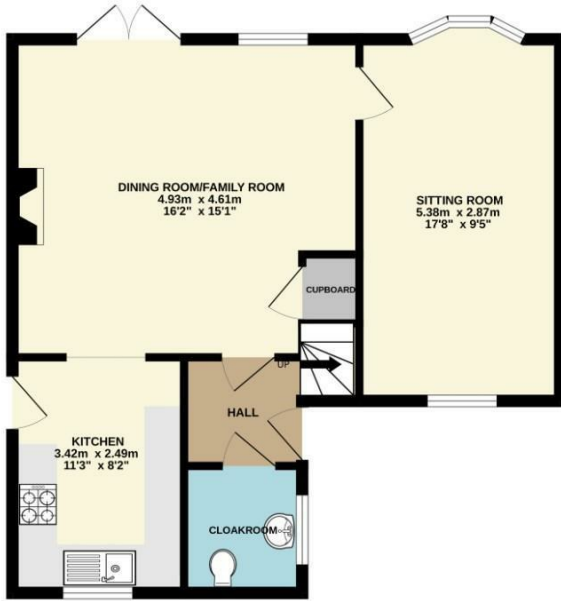
Shires Residential are pleased to offer this modern four bedroom detached house for rent. The property is situated on the popular Moreton Hall close to amenities and facilities and is offered in good decorative order. The accommodation offers Entrance Hall, Cloakroom, Kitchen with gas hob and electric oven and space for dishwasher and washing machine, Dining Room/Family Room, Sitting Room, Four Bedrooms all with storage, En Suite Shower Room & Family Bathroom. The property is located at the end of a cul de sac and has allocated parking and enclosed rear garden. Viewing is highly recommended.

- NEWLY DECORATED ACCOMMODATION
- SPACIOUS LIVING ACCOMMODATION
- BATHROOM AND EN-SUITE SHOWER ROOM
- PARKING
- GOOD LINKS TO RAF BASES
- NEWLY FITTED CARPETS
- FOUR BEDROOMS WITH FITTED WARDROBES
- ENCLOSED REAR GARDEN
- GREAT LOCATION
- AVAILABLE APRIL

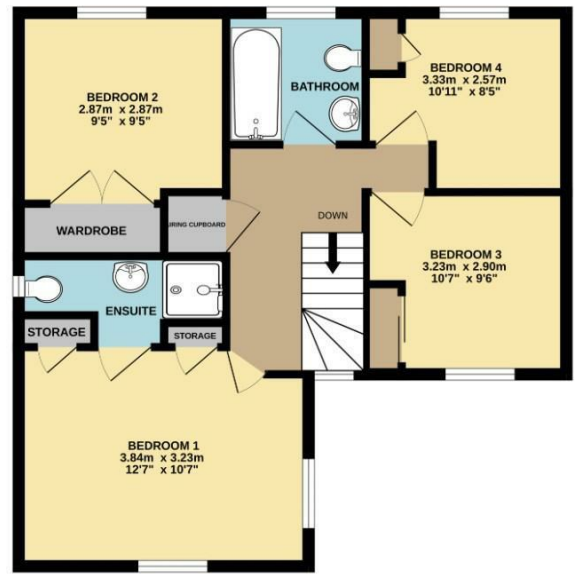


Council Tax Band: D - EPC Rating: C 75

GROUND FLOOR



1ST FLOOR



Whilst every attempt has been made to ensure the accuracy of the floorplan contained here, measurements of doors, windows, rooms and any other items are approximate and no responsibility is taken for any error, omission or mis-statement. This plan is for illustrative purposes only and should be used as such by any prospective purchaser. The services, systems and appliances shown have not been tested and no guarantee as to their operability or efficiency can be given.
Made with Metropix ©2025

