



Charter Mews, Bury St. Edmunds, Suffolk, IP33 1HP

Rent - £1,350 PCM Deposit - £1,557

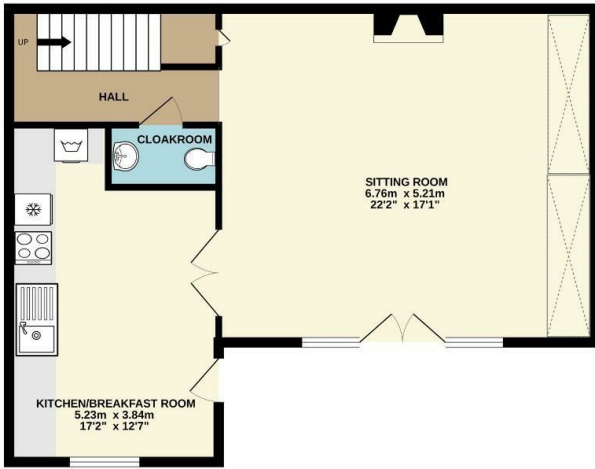
Shires Residential are delighted to offer to let this modern town house in a tucked away location off Northgate Street within easy access of the town centre and the train station and amenities. The property is in the process of being refurbished with new flooring, redecoration, new blinds, general cleaning and updating. The accommodation approached on the ground floor through a courtyard with an open plan Living/Dining Room with opening to Kitchen/Breakfast Room, Ground Floor Cloakroom. The first floor accommodation offers Three Bedrooms and a Shower Room and Bathroom. The property also offers parking for a small car adjacent to the house. The property is also located in a permit parking area. The property is offered with the benefit of Gas Fired Central Heating and a D Rated EPC.

- IMPRESSIVE TOWN HOUSE
- COURTYARD ENTRANCE, LOUNGE/ DINING ROOM
- MASTER BEDROOM WITH EN-SUITE
- UNFURNISHED, EPC D
- AVAILABLE NOW
- TUCKED AWAY, OFF NORTHGATE STREET
- KITCHEN/BREAKFAST ROOM
- 2 FURTHER BEDROOMS, BATHROOM
- GAS FIRED HEATING
- PARKING FOR SMALL CAR NEXT TO HOUSE - PARKING PERMIT AREA



Council Tax Band: TBC - EPC Rating: D 64

GROUND FLOOR



1ST FLOOR



Whilst every attempt has been made to ensure the accuracy of the floorplan contained here, measurements of doors, windows, rooms and any other items are approximate and no responsibility is taken for any error, omission or mis-statement. This plan is for illustrative purposes only and should be used as such by any prospective purchaser. The services, systems and appliances shown have not been tested and no guarantee as to their operability or efficiency can be given.
Made with Metropix ©2024

