



Cobb Close, Bury St. Edmunds, Suffolk, IP32 7LG

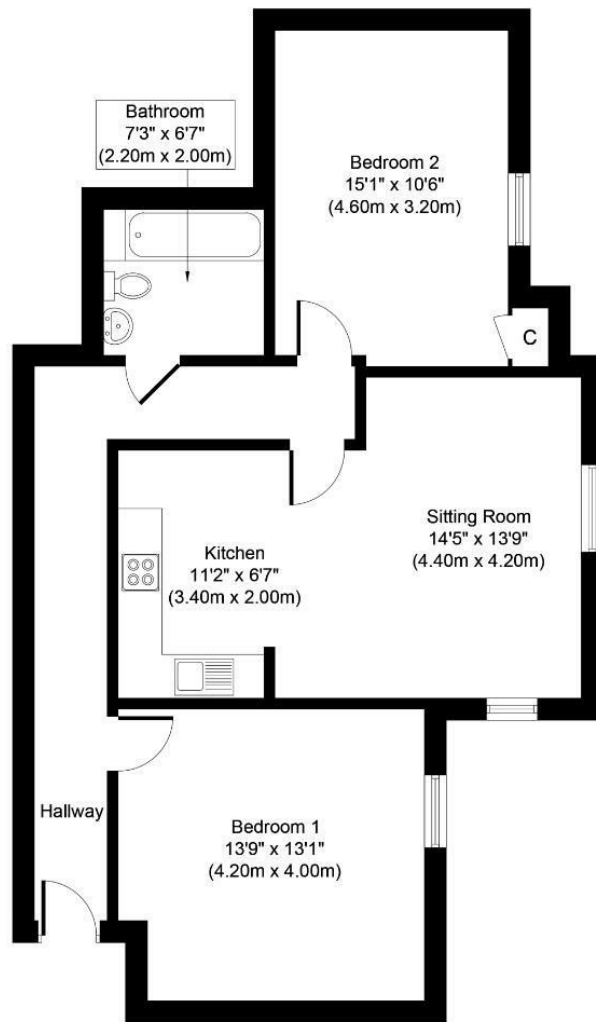
Rent - £1,125 PCM Deposit - £1,298

Shires Residential are pleased to offer this spacious two bedroom first floor apartment located on the popular Moreton hall development. The property comprises entrance hallway, open plan kitchen (with new electric oven fitted) sitting room / dining room, two large double bedrooms (one with fitted wardrobes), family bathroom. The property further benefits from gas central heating and one allocated parking space. New carpets fitted.

- SPACIOUS FIRST FLOOR APARTMENT
- TWO LARGE DOUBLE BEDROOMS (ONE WITH FITTED WARDROBES)
- FAMILY BATHROOM
- ONE ALLOCATED PARKING SPACE
- MINIMUM TERM CONTRACT TWELVE MONTHS, COUNCIL TAX BAND B
- OPEN PLAN KITCHEN WITH ELECTRIC OVEN
- SITTING ROOM / DINING ROOM
- GAS CENTRAL HEATING
- EPC B
- AVAILABLE SOON



Council Tax Band: B - EPC Rating: B 82



Approximate Floor Area
799 Sq. ft.
(74.2 Sq. m.)

Whilst every attempt has been made to ensure the accuracy of the floor plan contained here, measurements of doors, windows, rooms and any other items are approximate and no responsibility is taken for any error, omission, or mis-statement. This plan is for illustrative purposes only and should be used as such by any prospective purchaser or tenant. The services, systems and appliances shown have not been tested and no guarantee as to their operability or efficiency can be given.

Copyright V360 Ltd 2021 | www.houseviz.com

