

15-17 Eastgate Street, Bury St Edmunds, Suffolk, IP33 1XX  
Tel: 01284 760770  
bury@shiresresidential.com  
www.shiresresidential.com

shires

residential



## The Street, Bury St Edmunds, Suffolk, IP28 6JW

Rent - £950 PCM      Deposit - £1,096

Charming cottage in a popular village, well placed for the town of Bury St Edmunds and access to the A14.  
Viewing Highly Recommended. Sorry, no pets.

Virtual Tour Viewings

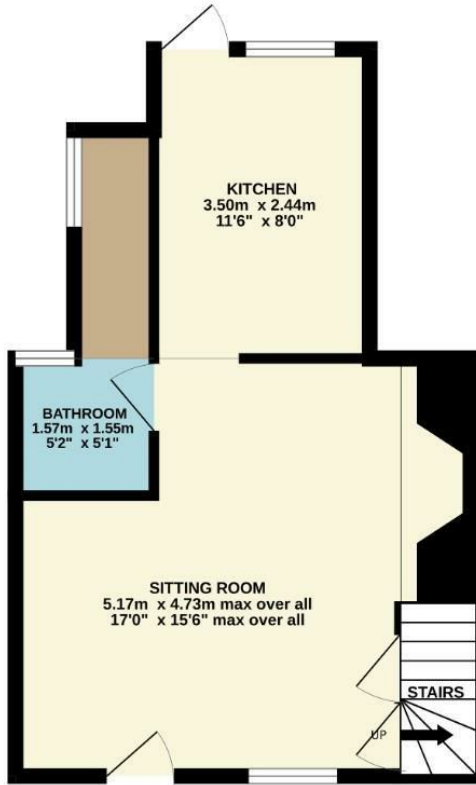
- CHARMING COTTAGE
- BEDROOM 1 THROUGH TO BEDROOM 2
- KITCHEN/ TWO BEDROOMS
- GROUND FLOOR BATHROOM
- ENCLOSED REAR GARDEN
- OFTEN REQUESTED VILLAGE LOCATION
- GAS CH, UNFURNISHED, EPC D
- APPROXIMATE SIZE - 597 SQ FT
- SORRY NO PETS / COUNCIL TAX BAND B
- AVAILABLE NOW



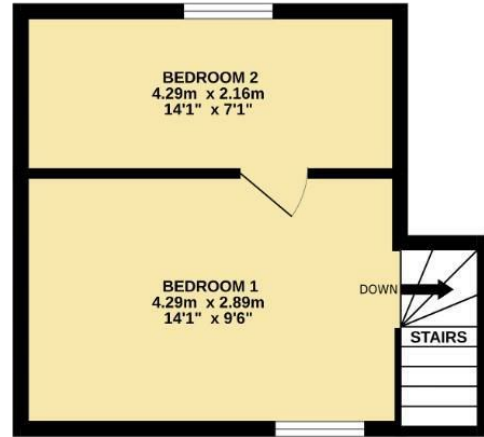
Council Tax Band: B - EPC Rating: null



GROUND FLOOR  
33.4 sq.m. (359 sq.ft.) approx.



1ST FLOOR  
22.1 sq.m. (238 sq.ft.) approx.



TOTAL FLOOR AREA : 55.5 sq.m. (598 sq.ft.) approx.

Whilst every attempt has been made to ensure the accuracy of the floorplan contained here, measurements of doors, windows, rooms and any other items are approximate and no responsibility is taken for any error, omission or mis-statement. This plan is for illustrative purposes only and should be used as such by any prospective purchaser. The services, systems and appliances shown have not been tested and no guarantee as to their operability or efficiency can be given.  
Made with Metropix ©2024

