

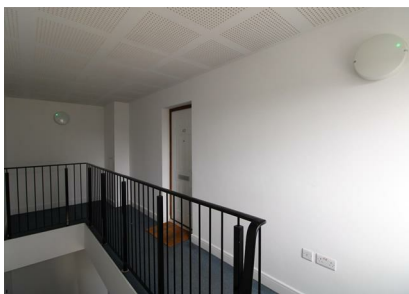


Forum Court, Bury St. Edmunds, IP32 6BP

Rent - £875 PCM Deposit - £1,009

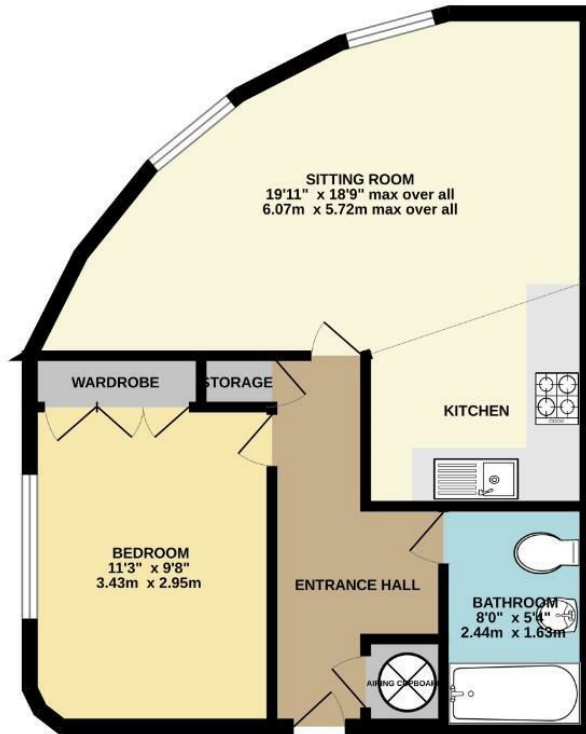
Modern top floor apartment with secure gated parking. The property is located close to the town centre and train station and provides accommodation comprising of entrance hallway, open plan kitchen / sitting room, double bedroom with fitted wardrobes and bathroom. Viewing highly recommended.

- TOP FLOOR MODERN APARTMENT
- 1 BEDROOM
- APPROXIMATE SIZE - 484 SQ FT
- BEAUTIFULLY PRESENTED
- AVAILABLE VERY SOON
- LOCATED CLOSE TO TOWN CENTRE AND TRAIN STATION
- ELECTRIC HEATING & ENERGY RATING - D
- SORRY NO PETS / COUNCIL TAX BAND A
- ONE ALLOCATED PARKING SPACE & GATED ACCESS



Council Tax Band: A - EPC Rating: D 66

GROUND FLOOR
483 sq.ft. (44.9 sq.m.) approx.



FORUM COURT B5E

TOTAL FLOOR AREA: 483 sq ft (44.9 sq m.) approx.

Whilst every attempt has been made to ensure the accuracy of the floorplan contained here, measurements of doors, windows, rooms and any other items are approximate and no responsibility is taken for any error, omissions or mis-statements. This plan is for illustrative purposes only and should be used as such by any prospective purchaser. The services, systems and appliances shown have not been tested and no guarantee as to their operability or efficiency can be given.
Made with Metaphor C2024

