

15-17 Eastgate Street, Bury St Edmunds, Suffolk, IP33 1XX
Tel: 01284 760770
bury@shiresresidential.com
www.shiresresidential.com

shires

residential



Fennel Drive, Bury St. Edmunds, IP28 8UZ

Rent - £375,000 Deposit -

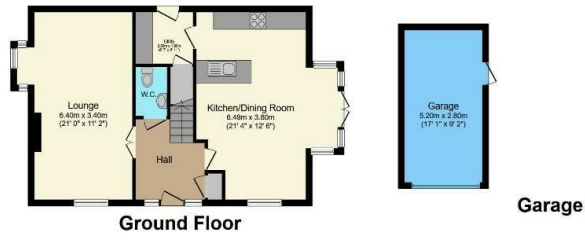
Shires Residential sales are delighted to offer to the market this beautifully presented four bedroom detached family home in the popular village of Red Lodge. The internal accommodation comprises of four good size bedrooms, (with en-suite to master), fantastic open plan kitchen diner, spacious living room, utility room, cloakroom and family bathroom. Externally the property boasts low maintenance rear garden, garage and driveway offering off road parking. View now to avoid disappointment.

- PROMINENT LOCATION
- OPEN PLAN KITCHEN DINER
- LOW MAINTENANCE GARDEN
- MODERN THROUGHOUT
- IMMACULATE THROUGHOUT
- SPACIOUS BEDROOMS
- GARAGE AND DRIVEWAY



Council Tax Band: D - EPC Rating: C 80

Master Floorplan Image



Total floor area 140.1 sq.m. (1,508 sq.ft.) approx

This floor plan is for illustrative purposes only. It is not drawn to scale. Any measurements, floor areas (including any total floor area), openings and orientation are approximate. No details are guaranteed, they cannot be relied upon for any purpose and they do not form part of any agreement. No liability is taken for any error, omission or misstatement. A party must rely upon its own inspection(s). Plan produced for Purplebricks. Powered by www.focalagent.com

