

15-17 Eastgate Street, Bury St Edmunds, Suffolk, IP33 1XX  
Tel: 01284 760770  
bury@shiresresidential.com  
www.shiresresidential.com



**The Street, Bury St. Edmunds, Suffolk, IP29 4UH**  
**Rent - £450,000      Deposit -**

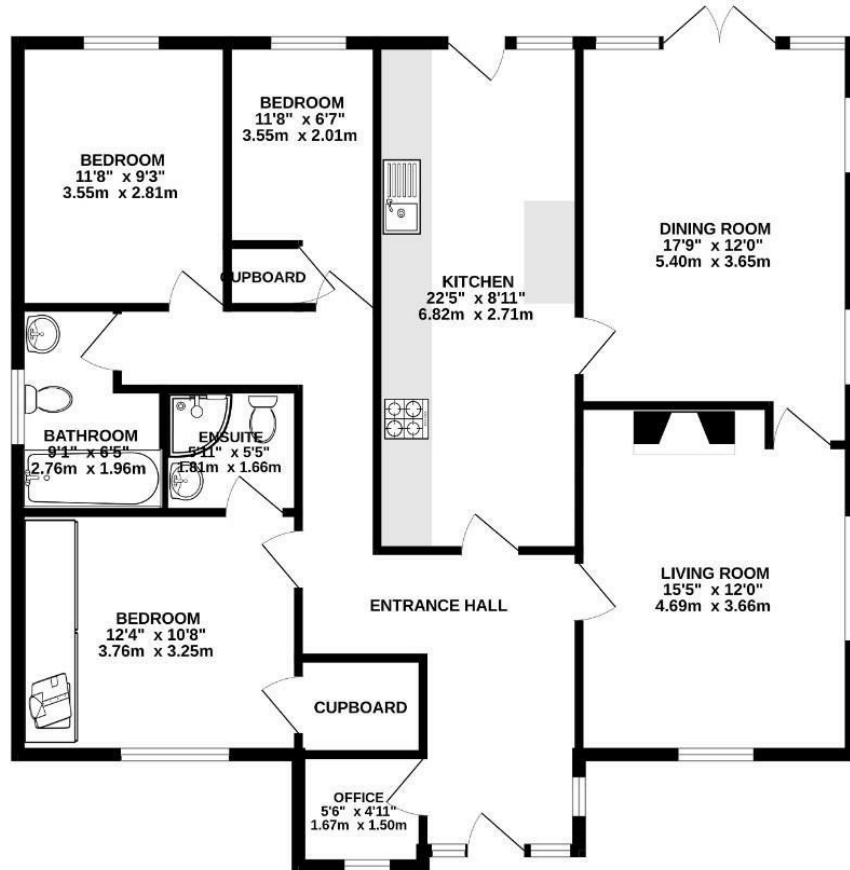
Shires Residential are delighted to offer to market this fantastic 3 bedroom detached bungalow in the sought after village of Chedburgh. The internal accommodation comprises 3 bedrooms (with ensuite to master), living room, dining room, modern kitchen, study and family bathroom. Externally, the property boasts a generous rear garden, large driveway, and garage. The property has been extremely well looked after by the current owners, and viewing is strongly advised!

- POPULAR VILLAGE
- BEAUTIFULLY PRESENTED
- GARAGE
- COUNCIL TAX BAND D
- FANTASTIC TRANSPORT LINKS
- LARGE DRIVEWAY
- TWO RECEPTION ROOMS
- EPC TBC



Council Tax Band: - EPC Rating: D 56

GROUND FLOOR  
1199 sq.ft. (111.4 sq.m.) approx.



QUEENS DOWN, THE STREET, CHEDBURGH

TOTAL FLOOR AREA: 1199 sq.ft. (111.4 sq.m.) approx.

Whilst every attempt has been made to ensure the accuracy of the floorplan contained here, measurements of doors, windows, rooms and any other items are approximate and no responsibility is taken for any error, omission or mis-statement. This plan is for illustrative purposes only and should be used as such by any prospective purchaser. The services, systems and appliances shown have not been tested and no guarantee as to their operability or efficiency can be given.  
Made with Metropix ©2024

