







## **Accommodation**

Located in a highly desirable area, this beautifully presented detached family home has been extended and completely transformed by the current owners. A single storey extension has created further living space, whilst the garage has also been converted, meaning the house now reveals a flexible 4/5 bedroom layout. The option of a downstairs bedroom, along with the ground floor shower room, mean the layout is also perfect for purchasers wanting to incorporate an elderly relative or resident requiring ground floor living.

The house now reveals a meticulously maintained and spacious interior, extending to approximately 1850 square feet in total. The property offers a very well presented interior, feeling light and airy, with neutral tones used throughout. The large open plan kitchen/diner/garden room is a real feature, ideal for family living and being both stylish and practical, coming fully equipped with fitted appliances and a breakfast bar.

The house is located in a small cul-de-sac and situated in one of Ripon's most sought after residential areas. The property is well placed for Ripon's secondary schools, with both the Outwood Academy and the highly regarded Ripon Grammar School just a short distance away. Shops and amenities are available close by, whilst the house is also ideally placed for countryside walks.

The main entrance door leads to a spacious entrance hall, with a stairs rising to the first floor and understairs storage. The large double aspect living room offers garden access and a wood burning stove. The open plan kitchen/diner/garden room offers a great family friendly entertainment space, whilst a further reception room/bedroom and modern shower room, complete the downstairs layout. To the first floor there is a spacious landing with loft access, main bedroom with a stylish fully tiled ensuite, three further bedrooms (two of which have fitted storage) and a further shower room, part tiled and again fitted with a modern white suite.

Externally there is an open lawned front garden, whilst a block paved driveway provides parking. A pathway leads to the side of the house, giving access through a gate to the enclosed rear garden. The rear garden is split level and fully landscaped, with paved seating areas to both levels, creating a lovely space to relax and unwind.

Properties of this quality are rare to market and an internal inspection is required to appreciate the space and flexibility available, whilst the house also offers great value for money, in comparison to the current new builds available in the Ripon area.



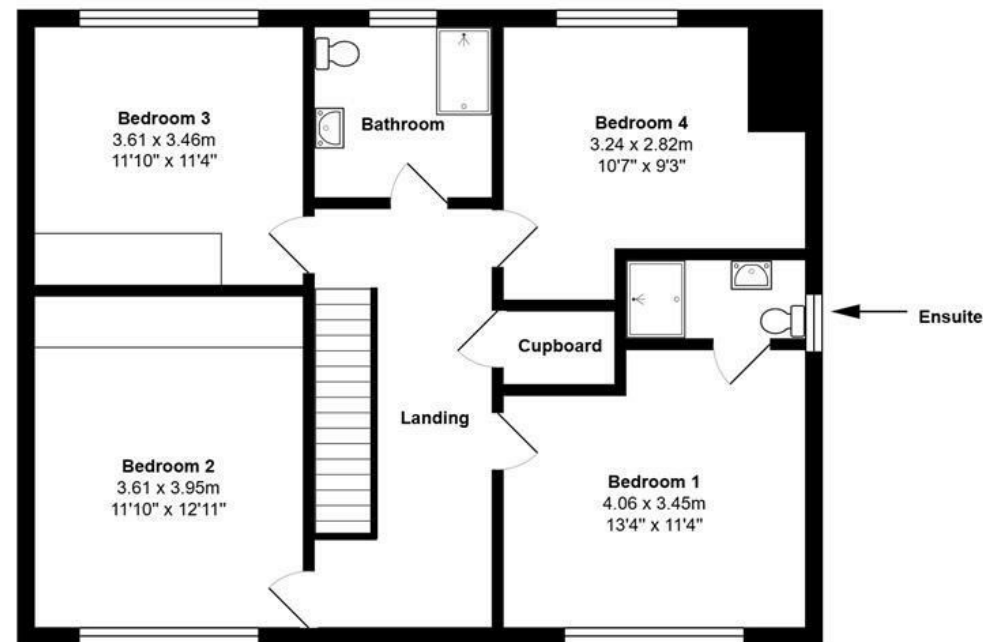




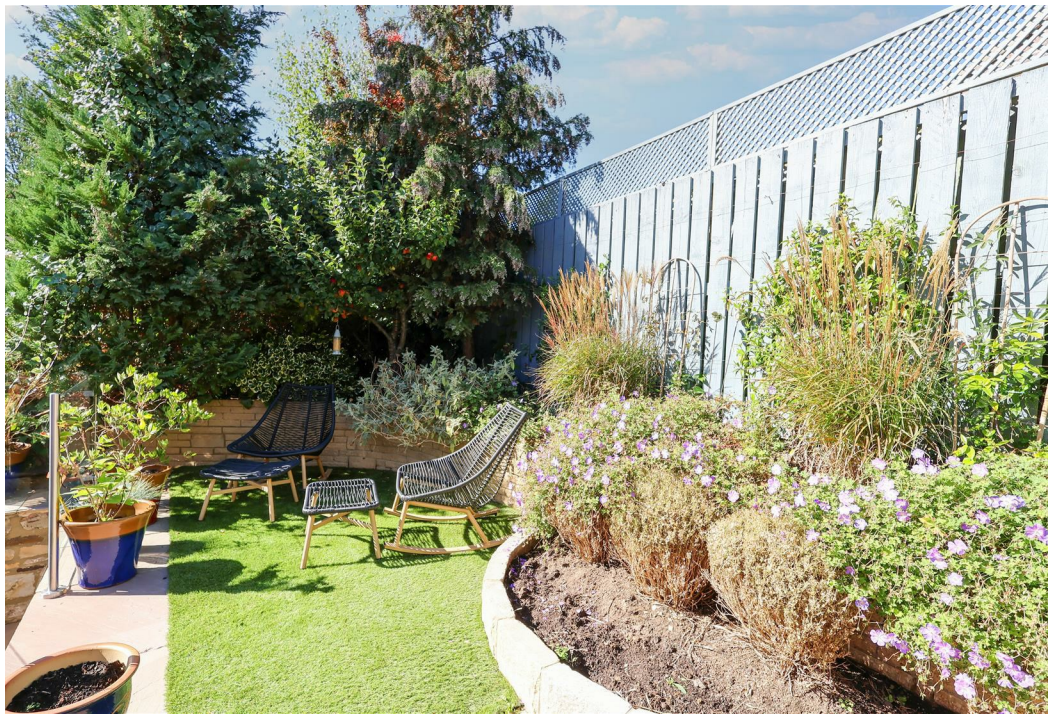




Floorplan

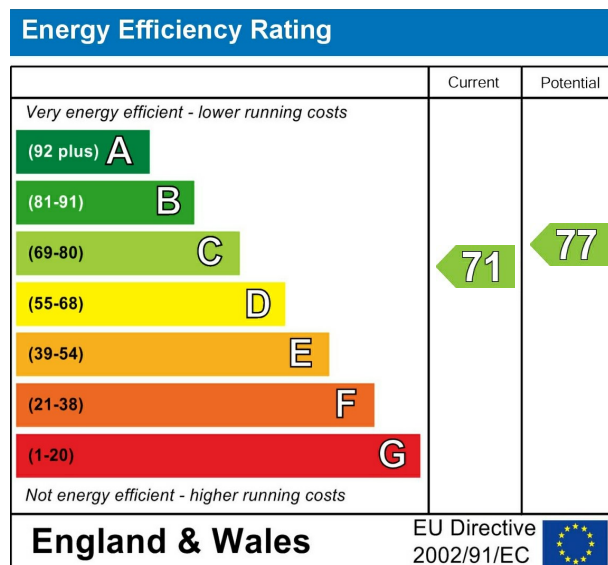








## EPC



VIEWING BY APPOINTMENT ONLY - 01765 602233 - [sales@davislund.co.uk](mailto:sales@davislund.co.uk) - [www.davislund.co.uk](http://www.davislund.co.uk)

**MONEY LAUNDERING REGULATIONS 2003** - Intending purchasers will be asked to produce identification and proof of financial status when an offer is received. We would ask for your co-operation in order that there will be no delay in agreeing the sale.

Davis & Lund Ltd trading as Davis & Lund, registered office: 5a Kirkgate, Ripon, HG4 1PA. Registered in England No 10034416. Registered for VAT No 243 2008 51

Davis & Lund Ltd have prepared these property details on the seller's behalf. Davis & Lund Ltd have taken reasonable steps to check the content, but no information should be taken as a statement of fact. All measurements are approximate and should be taken as a guide, potential purchasers should satisfy themselves as to the accuracy. Floorplans are produced as a guide and they are not to scale. All fixtures and fittings are not included in the sale, unless stated. Heating systems, electrics, services and appliances have not been tested and no warranty is given to their working order

