



Cleveland Street, W1T

£323 Per week

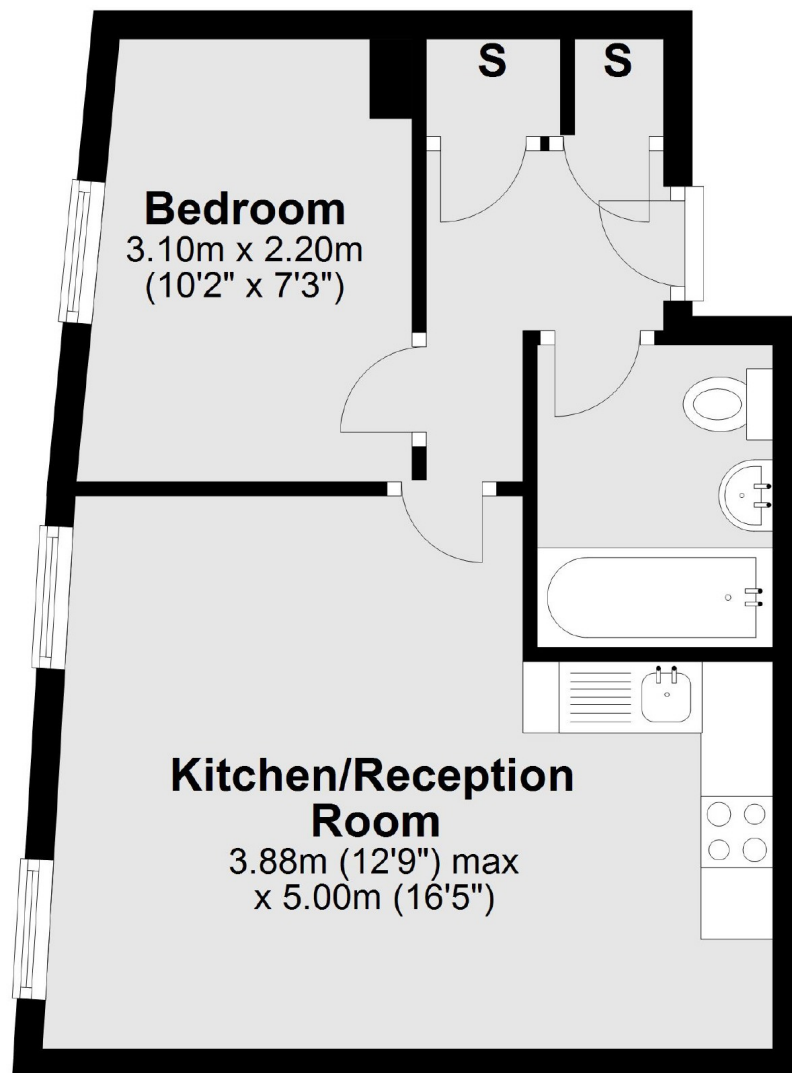
A bright, modern and recently refurbished one double bedroom apartment on the first floor of this period conversion, conveniently located just behind Fitzroy Square and close to Warren Street.

Cleveland Street is located south of Fitzroy Square and is less than half a mile from Warren Street and Great Portland Street. There is a wide variety of shops and restaurants on nearby Tottenham Court Road.

Features

Second Floor
Wood Floors
New Bathroom
High Ceilings
Period Conversion
Very Bright

Cleveland Street,
London, W1T



Second Floor

Total area: approx. 32.9 sq. metres (353.6 sq. feet)

Contact

To arrange a viewing call our office on the number below or visit our website.



Energy Rating: D. We aim to make our particulars both accurate and reliable. However they are not guaranteed; nor do they form part of an offer or contract. If you require clarification on any points then please contact us, especially if you're traveling some distance to view. Please note that appliances and heating systems have not been tested and therefore no warranties can be given as to their good working order.