



Goodge Street, W1T

£923 Per week

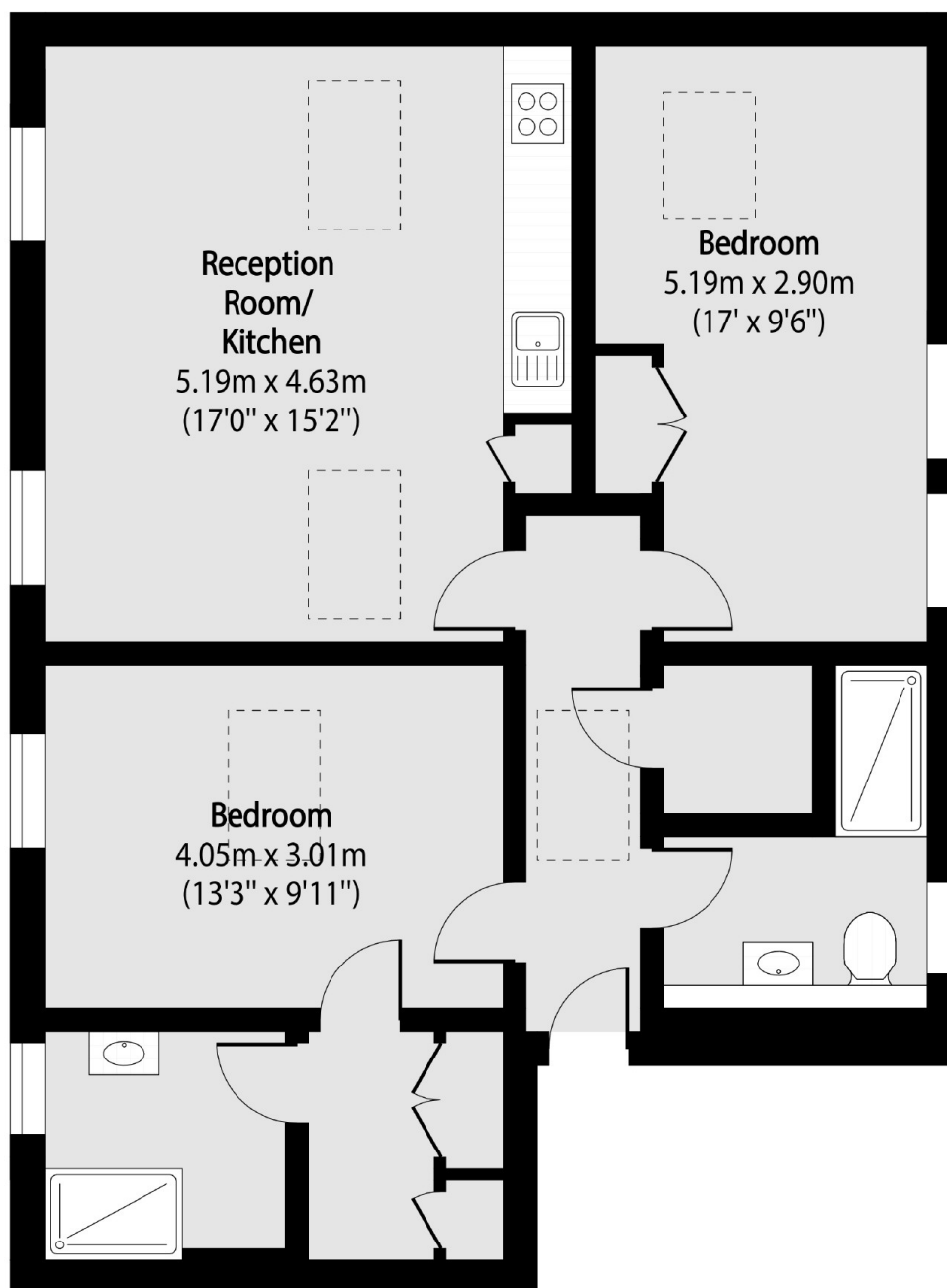
This well presented two bedroom flat is conveniently located in the heart of Fitzrovia. The flat is extremely spacious and has a well equipped kitchen with wooden floors throughout the apartment.

Goodge Street is in the heart of Fitzrovia and is set amongst a wide array of restaurants, bars and cafés including 'Pied De Terre' and the Charlotte Street Hotel. Goodge Street and Tottenham Court Road Stations are nearby.

Features

- Top Floor Flat
- Central Location
- Wooden Flooring
- Good Storage
- Furnished
- Modern

Goodge Street, London, W1T



Total area (approx): 73.72 sq m (794 sq. ft)