



Cleveland Street, W1T

£830,000

A two double bedroom apartment in a period building at the southerly end of Cleveland Street. Sold with a long lease to 2172.

Moments from Fitzrovia's cafés and restaurants and the stations at Goodge Street and Tottenham Court Road. London's West End is accessible on foot.

Features

- Two Bedrooms
- Reception-Dining Room
- Modern Integrated Kitchen
- Shower Room
- Second Floor
- Lease To 2172

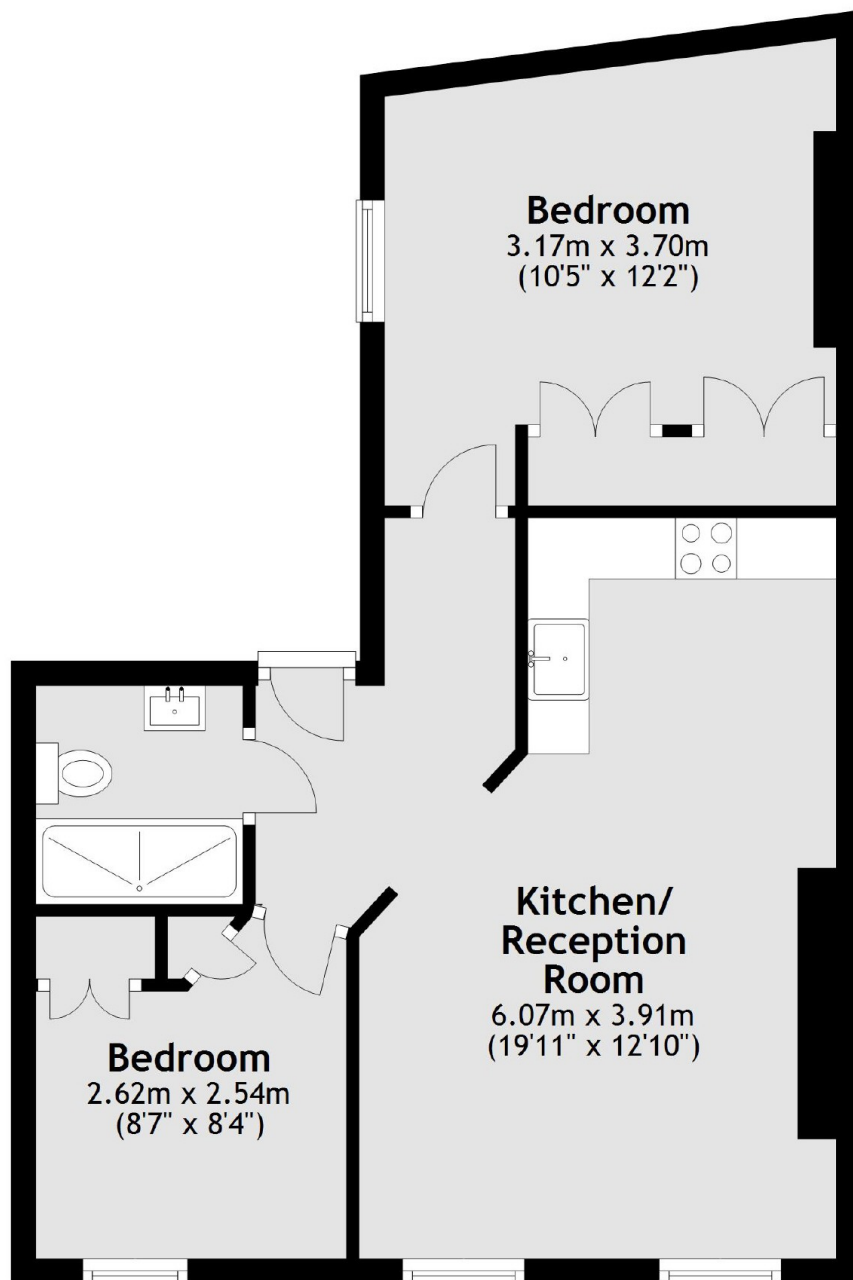


Cleveland Street, W1T

The open plan reception space has wood flooring and adequate space to dine, opens to the modern integrated kitchen. The main bedroom faces a rear courtyard and both bedrooms have full length built in wardrobes. There is a contemporary shower room with heated flooring.



Cleveland Street, London, W1T



Total area: approx. 49.5 sq. metres (532.8 sq. feet)