

Conway Street, W1T

£1,000 Per week

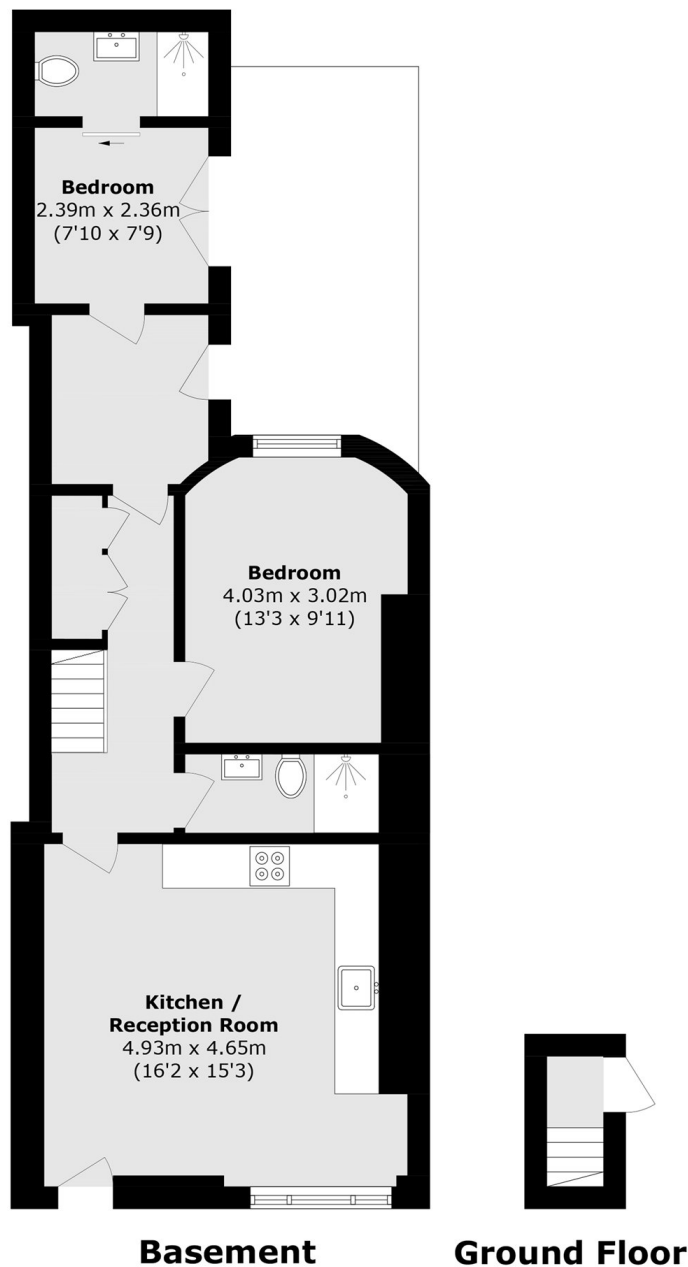
This exceptionally bright two bedroom, two bathroom property is conveniently located in the heart of Fitzrovia. The property offers an open plan kitchen/reception area with wooden flooring throughout the apartment.

Close proximity to Great Portland Street and Regent's Park train stations. Just moments away from Regent's Park and Fitzroy Square Gardens.

Features

Central Location
Newly Refurbished
Exceptionally Bright
Wooden Floors
Open Plan
Modern

Conway Street, London, W1T



Total area (approx.): 62.6 sq. m (673.8 sq. ft)

Dexters

Fitzrovia & Covent Garden
66 Goodge Street
London
W1T 4NG
Lettings
020 7067 2402

Energy Rating: C. We aim to make our particulars both accurate and reliable. However they are not guaranteed; nor do they form part of an offer or contract. If you require clarification on any points then please contact us, especially if you're traveling some distance to view. Please note that appliances and heating systems have not been tested and therefore no warranties can be given as to their good working order.

 **RICS** | Regulated
Estate Agent
and Letting Agent

[dexters.co.uk](https://www.dexters.co.uk)