



**Marshall Street, W1F**  
£1,300,000

**Dexters**





## Marshall Street, W1F

A contemporary styled apartment located above the Renaissance Grade II listed facade of the Marshall Street Baths. With private outdoor space and bright open plan living space and a long lease.

The Marshall Street Baths were built in 1928-31. The baths were closed in 1997 and reopened in 2010 after renovation and refurbishment, including converting the smaller pool into a gym and converting the entrance block into flats where the property is sited.

The dual aspect reception is located on the upper floor, opens to the terrace and has a modern kitchen with integrated appliances. The entrance and lower level has the bedroom, dressing room and sleek shower room.

Located between Carnaby Street and Soho on the doorstep of the West Ends world class retail and entertaining amenities. Local Stations are Oxford Circus and Piccadilly Circus.

### Features

- One Bedroom
- Terrace With Roof Top Views
- Lease 250 years From 2008
- Grade II Listed Building
- Hardwood Floors
- Lift





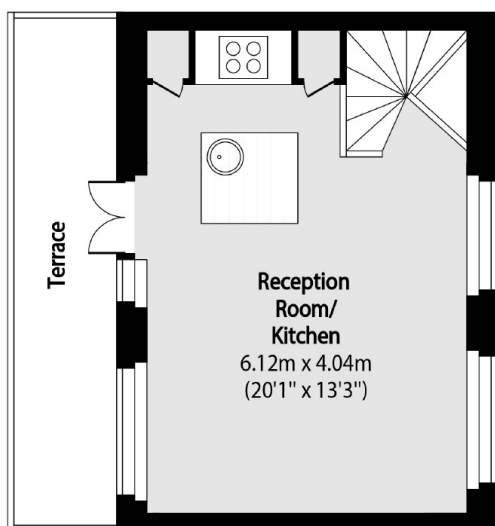




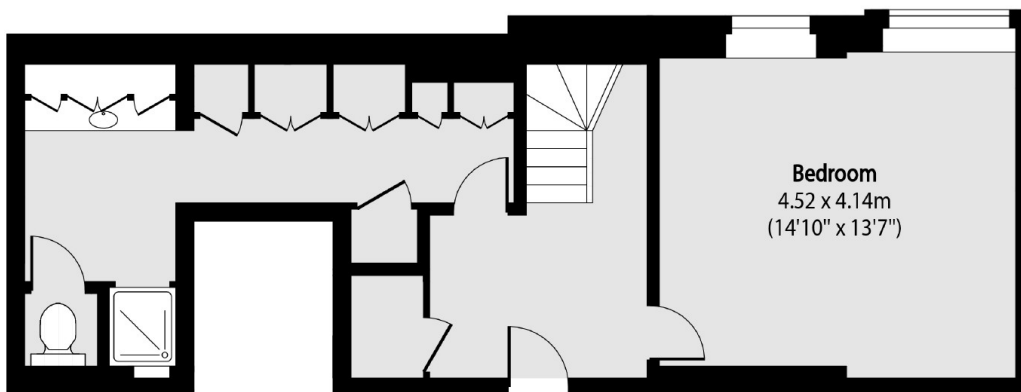




# Marshall Street, London, W1F



Fourth Floor



Third Floor

Total area (approx): 69.67 sq m (750 sq. ft)

Terrace total area (approx): 8.26 sq m (89 sq. ft)