



Grafton Mews, W1T

£1,050,000

A two double bedroom, two bathroom interior designed apartment with superb open plan living. Located in a cobbled mews within the Fitzroy Square Conservation Area.

Moments from Warren Street, Goodge Street and Great Portland Street stations. Regents Park and the Restaurants of Charlotte Street are close by.

Features

- Two Double Bedrooms
- Two Bathrooms
- Open-Plan Living/Dining Room
- Interior Designed
- Wood Floors
- Private Aspect

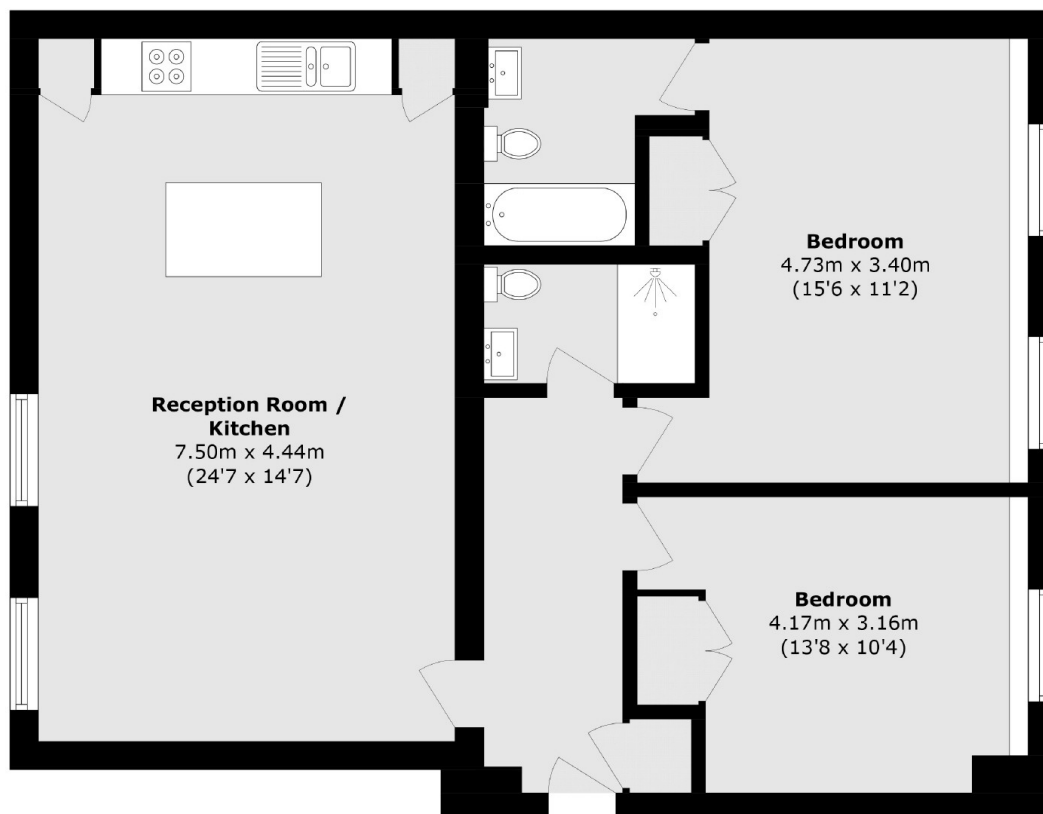


Grafton Mews, WIT

Located in a building of just 6 apartments. The stylish apartment has an open plan living room with two windows and an exposed brick wall. The modern fitted kitchen has integrated appliances including two Neff ovens, a De Dietrich induction hob and a drinks chiller, there is a breakfast bar providing informal dining space. The main bedroom has a built in wardrobe and a en suite bathroom, the second bedroom has a built in wardrobe. There is a shower room/guest cloakroom.



Grafton Mews, London, W1T



Total area (approx.): 82.4 sq.m (886.9 sq. ft)