



Johnsons Court, EC4A

£550 Per week

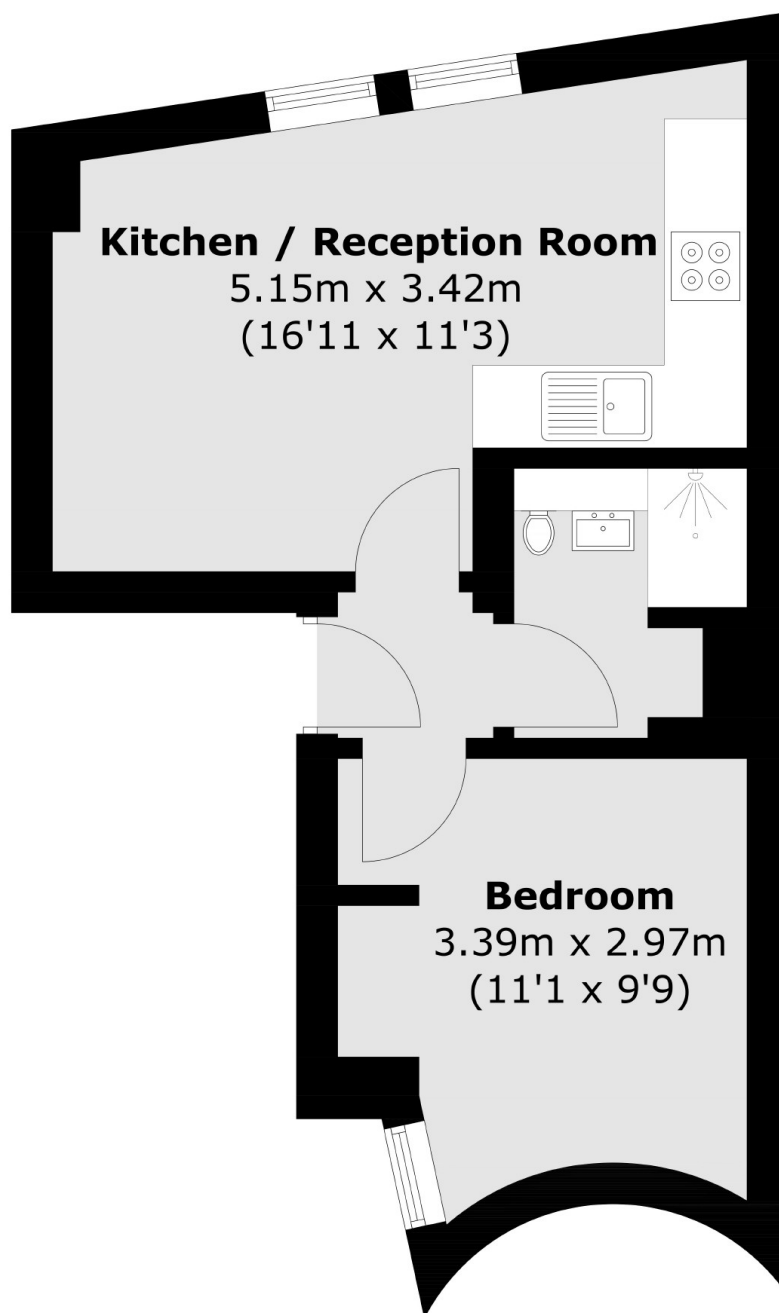
This modern one bedroom apartment is conveniently located in the heart of Fitzrovia. The property has an open plan kitchen/reception area along with wooden floors throughout the property.

Centrally located in the heart of Fitzrovia, minutes away from Chancery Lane and Holborn train station, with low proximity to London School of Economics and King's College.

Features

- One Bedroom
- Central Location
- Modern Interior
- Wooden Floors
- Furnished
- Open Plan

Johnsons Court, London, EC4A



Total area (approx.): 29.5 sq. m (317.5 sq. ft)

Dexters

Fitzrovia & Covent Garden
66 Goodge Street
London
W1T 4NG
Lettings
020 7067 2402

Energy Rating: C. We aim to make our particulars both accurate and reliable. However they are not guaranteed; nor do they form part of an offer or contract. If you require clarification on any points then please contact us, especially if you're traveling some distance to view. Please note that appliances and heating systems have not been tested and therefore no warranties can be given as to their good working order.

 **RICS** | Regulated
Estate Agent
and Letting Agent

[dexters.co.uk](https://www.dexters.co.uk)