



Conway Street, W1T

£750 Per week

A bright and extraordinarily spacious, two bedroom apartment situated on the ground floor of this period building in the centre of Fitzrovia. The apartment has many well-preserved Victorian period features including high ceilings and large windows, along with an open plan kitchen/reception.

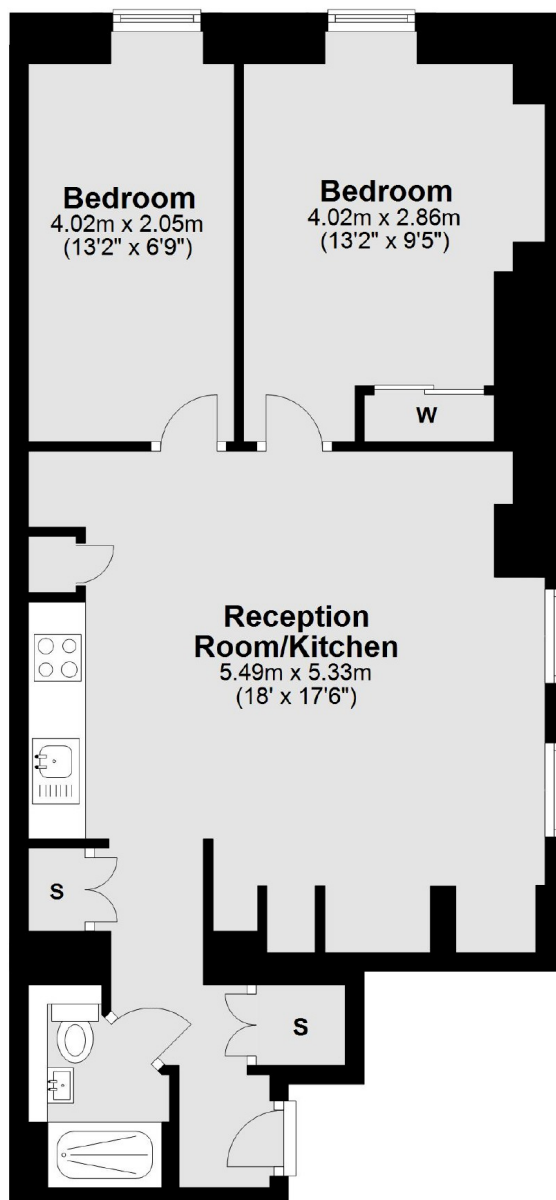
Conway Street is just off the famous Fitzroy Square and is just a few yards away from Tottenham Court Road with its wide array of shops, bars and restaurants.

Features

- Two Bedrooms
- High Ceilings
- Close to Regents Park
- Wooden Flooring
- Open Plan Kitchen/ Reception

Conway Street, London, W1T

Ground Floor



Total area: approx. 59.2 sq. metres (636.8 sq. feet)