



Cleveland Street, W1T

£1,615 Per week

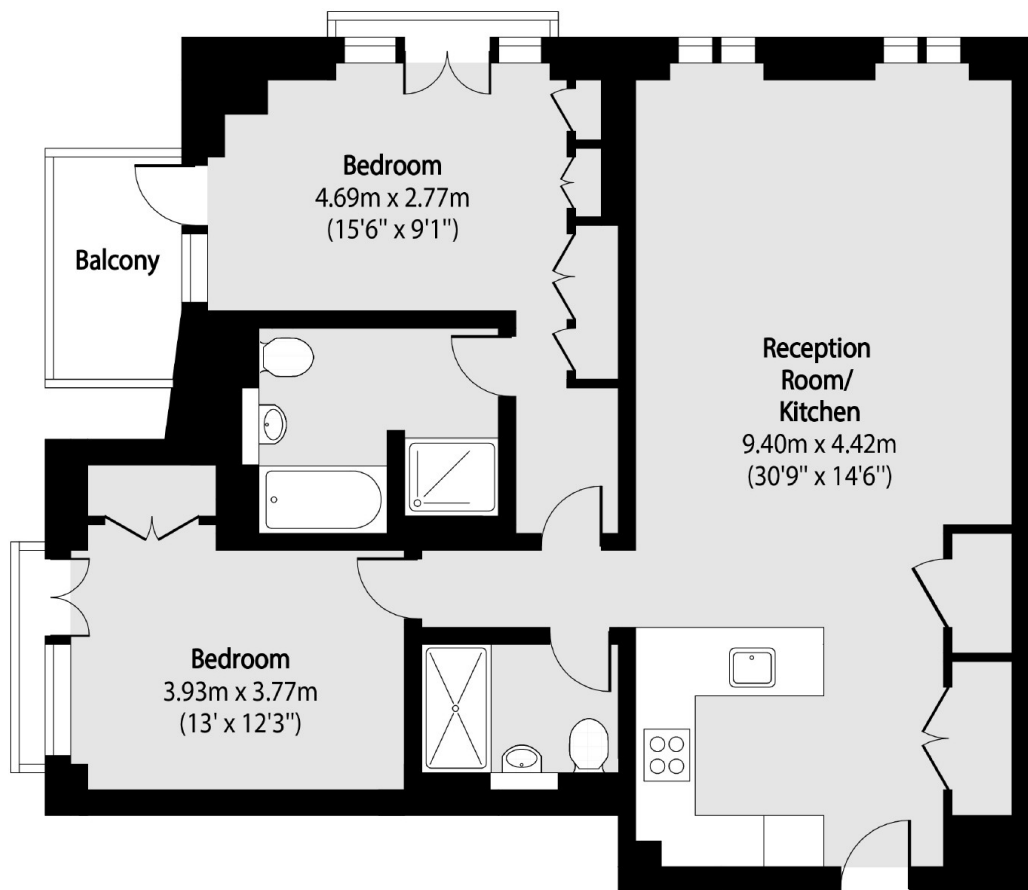
This beautifully presented property features an open-plan kitchen and reception area, a master bedroom with an en-suite bathroom and private balcony, a second double bedroom, and a separate shower room. Both bedrooms benefit from bespoke built-in wardrobes.

This new build development is located in the heart of Fitzrovia, with an array of restaurants on Charlotte Street, Marylebone High Street and Great Portland Street. The closest underground station is Great Portland Street (0.2 miles away)

Features

- Two Bedrooms
- 24 Hour Concierge
- Balcony
- Two Lifts
- Third Floor
- Gym

Cleveland Street, London, W1T



Total area (approx): 87.20 sq m (938 sq. ft)

Balcony total area (approx): 3.86 sq m (42 sq. ft)

Dexters

Fitzrovia & Covent Garden
66 Goodge Street
London
W1T 4NG
Lettings
020 7067 2402

Energy Rating: . We aim to make our particulars both accurate and reliable. However they are not guaranteed; nor do they form part of an offer or contract. If you require clarification on any points then please contact us, especially if you're traveling some distance to view. Please note that appliances and heating systems have not been tested and therefore no warranties can be given as to their good working order.

 **RICS** | Regulated
Estate Agent
and Letting Agent

[dexters.co.uk](https://www.dexters.co.uk)