



Hobhouse Court, SW1Y

£825 Per week

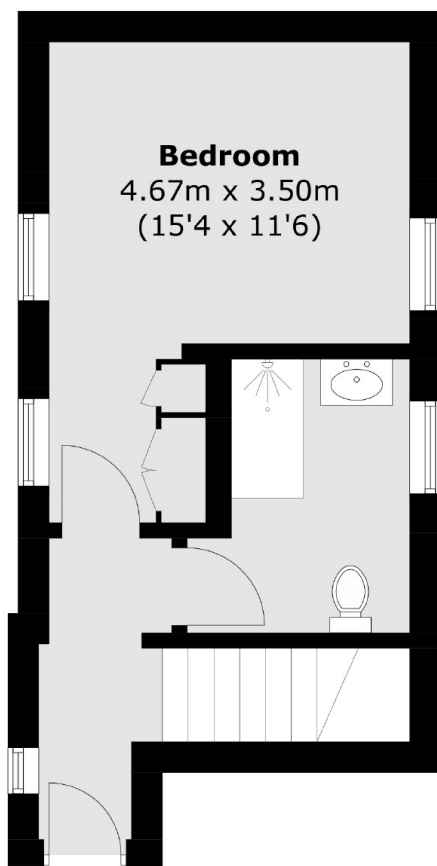
A stunning one bedroom, one bathroom apartment on the ground floor of the gated prestigious Hobhouse Court development. The property offers wooden floors throughout as well as separate fully fitted kitchen.

Hobhouse Court is located less than 50 meters from Trafalgar Square and is between Mayfair, Leicester Square and St James's Park. Leicester Square Station, Piccadilly Circus and Charing Cross Station are all located within walking distance of the development.

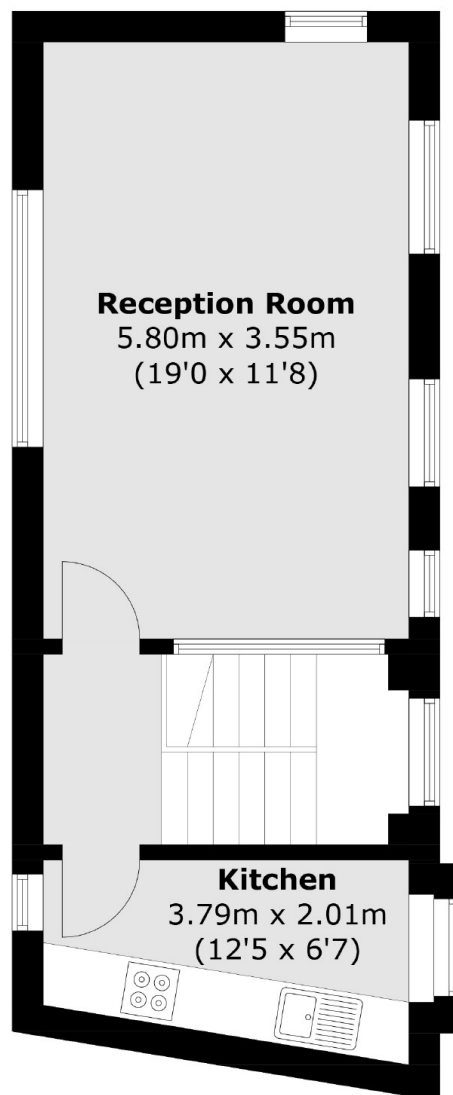
Features

- Gated Development
- Split Level
- Concierge
- Prime Location
- Modern
- High Ceilings

Hobhouse Court, London, SW1Y



Ground Floor



First Floor

Total area (approx.): 59.1 sq. m (636.1 sq. ft)