



## Rathbone Place, W1T

£1,200 Per week

This designer furnished one double bedroom apartment is spacious and bright with a dressing room, guest bathroom and private balcony away from busy streets yet located just off Oxford Street in central Fitzrovia.

Rathbone Place has been designed to offer a tranquil environment, whilst being conveniently located in the heart of London's West End and just off Oxford Street.

### Features

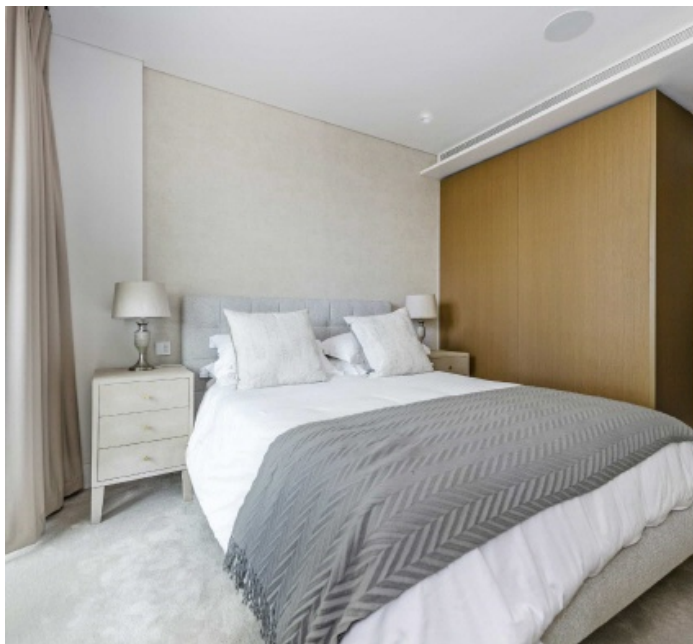
- One-Bedroom
- Separate WC
- Private Balcony
- 24-Hour Concierge
- Swimming Pool
- Gym



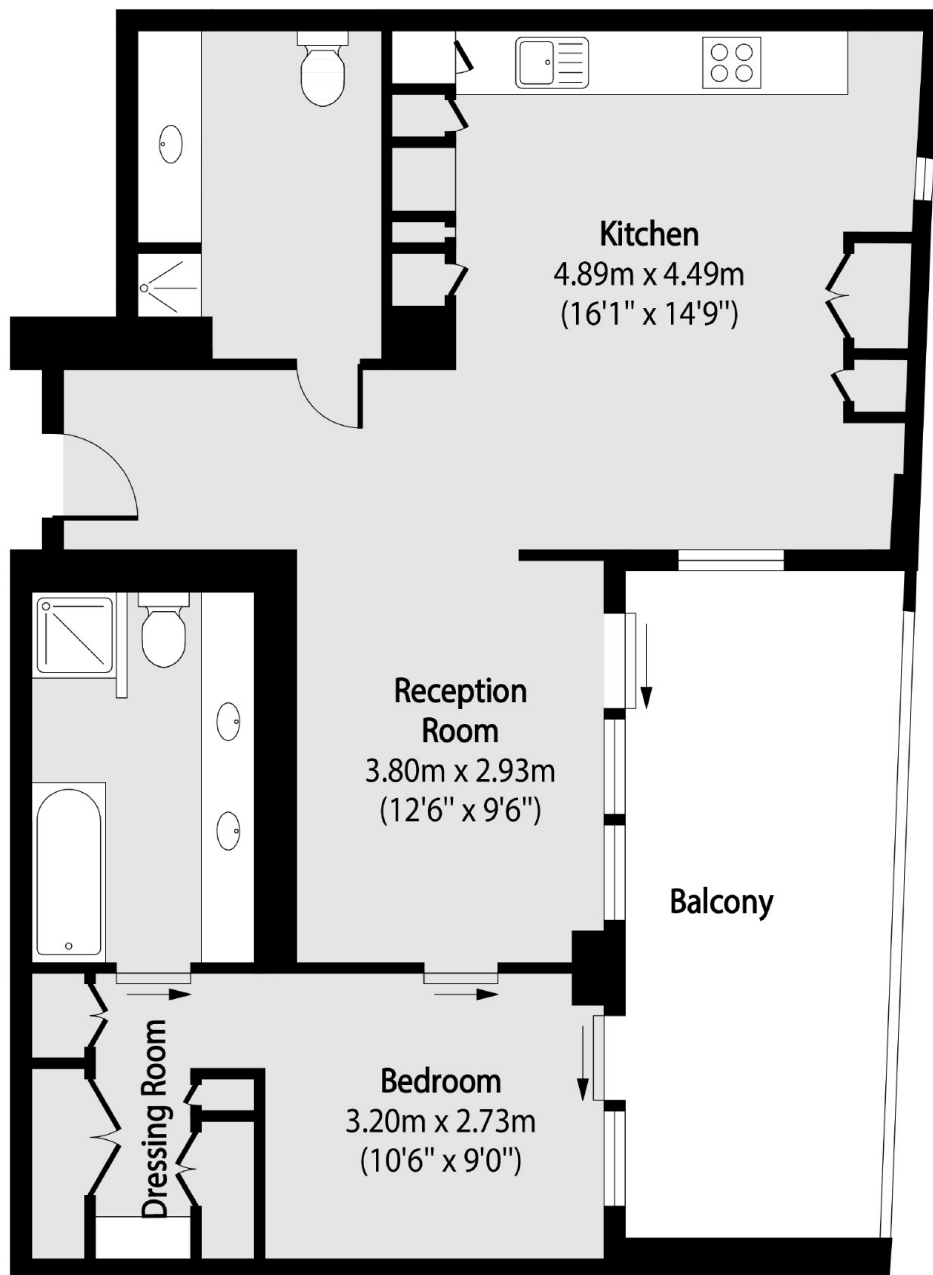
## Rathbone Place, W1T

The apartment is located in a highly sought after development that embodies luxury residential living with a vast variety of facilities including access to a 24 hour concierge, beautiful communal gardens, residents' lounge, screening room, gymnasium, swimming pool, sauna and steam room. Residents have access to a 24 hour concierge, beautiful communal gardens, residents' lounge, wine storage and tasting room, screening room, gymnasium, swimming pool, sauna and steam room.





# Rathbone Place, London, W1T



Total area (approx): 69.67 sq m (750 sq. ft)

Balcony total area (approx): 13.23 sq m (142 sq. ft)