



**Fitzroy Street, W1T**

**£900** Per week

**Dexters**



## Fitzroy Street, W1T

This modern two bedroom, two bathroom apartment is conveniently located in the heart of Fitzrovia within a stunning Georgian building on the popular Fitzroy Street. The apartment offers a fully fitted open plan kitchen with wooden floors throughout the property.

Fitzroy Street is located just south of Fitzroy Square and is less than half a mile from Warren Street and Great Portland Street. There is a wide variety of shops and restaurants available on nearby Tottenham Court Road and Goodge Street.

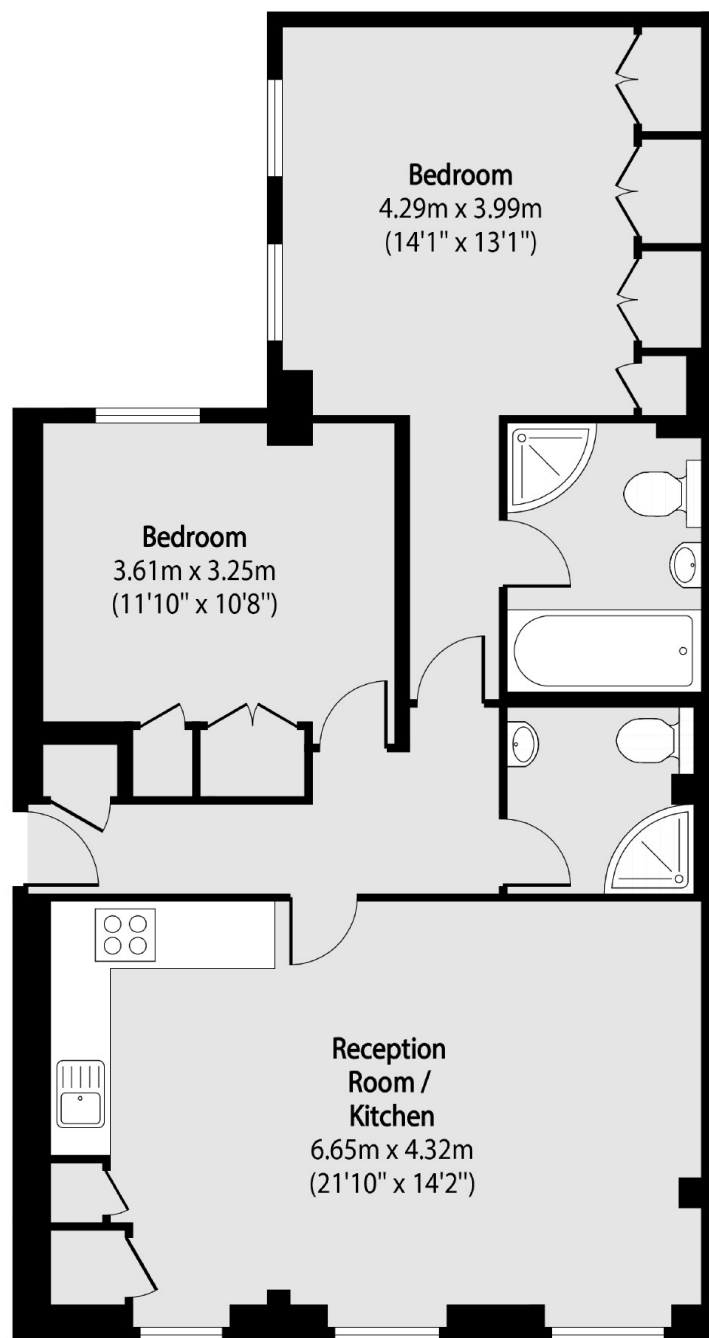
### Features

- Two Bedrooms
- Good Natural Light
- Recently Refurbished
- Wooden Floors
- Ground Floor Flat
- Central Location





# Fitzroy Street, London, W1T



Total area (approx): 78.59 sq m (846 sq. ft)