



## Goodge Street, W1T

£842 Per week

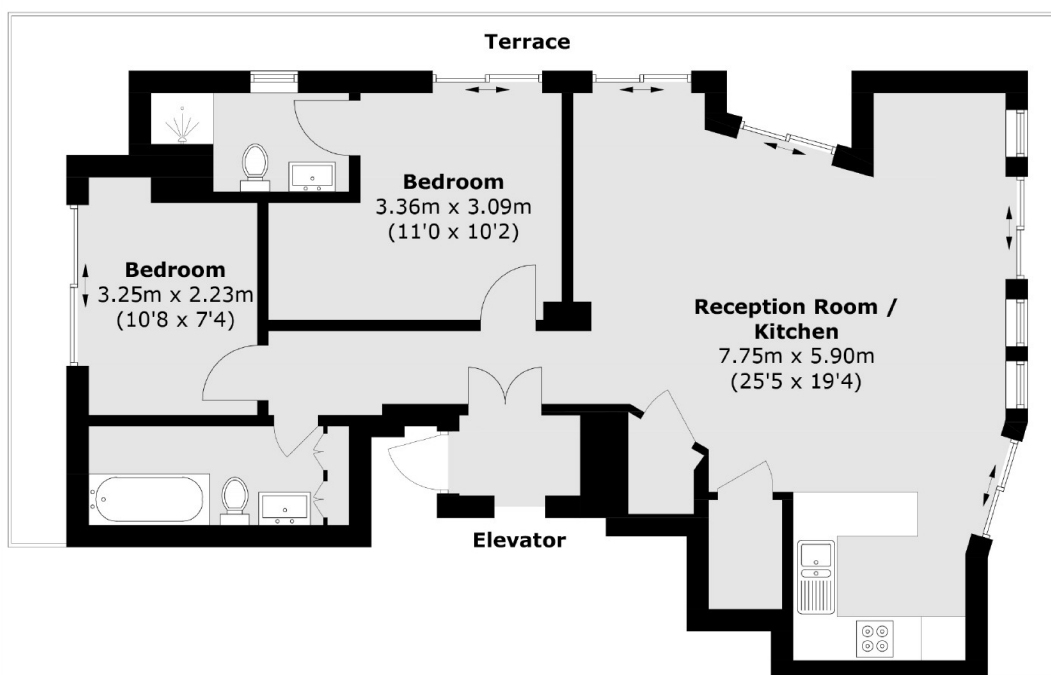
This fantastic two double bedroom penthouse apartment is located in the heart of Fitzrovia area and has a large private wrap-around terrace with stunning views over London along with famous BT Tower. This exceptionally bright, open plan kitchen penthouse apartment is located on the top floor of this sought after development and has direct lift access into the apartment.

Goodge Street is in the heart of Fitzrovia and is set amongst a wide array of restaurants, bars and cafés including 'Pied De Terre' and the Charlotte Street Hotel. Goodge Street and Tottenham Court Road Stations are nearby.

### Features

- Penthouse
- Two Double Bedroom
- Two Bathroom
- Direct Lift Access
- Private Terrace
- Exceptionally Spacious
- Central Location

# Goodge Street, London, W1T



Total area (approx.): 74.4 sq. m (800.8 sq. ft)  
Terrace: 23.1 sq. m (248.6 sq. ft)

## Dexters

Fitzrovia & Covent Garden  
66 Goodge Street  
London  
W1T 4NG  
Lettings  
020 7067 2402

Energy Rating: C. We aim to make our particulars both accurate and reliable. However they are not guaranteed; nor do they form part of an offer or contract. If you require clarification on any points then please contact us, especially if you're traveling some distance to view. Please note that appliances and heating systems have not been tested and therefore no warranties can be given as to their good working order.

 **RICS** | Regulated  
Estate Agent  
and Letting Agent

[dexters.co.uk](https://www.dexters.co.uk)