



Great Portland Street, W1W

£1,320 Per week

Dexters



Great Portland Street, W1W

A exceptionally spacious three bedroom, two bathroom apartment. The property has a large reception room with feature fireplace, modern kitchen, master bedroom with en-suite bathroom, two further bedrooms and family bathroom

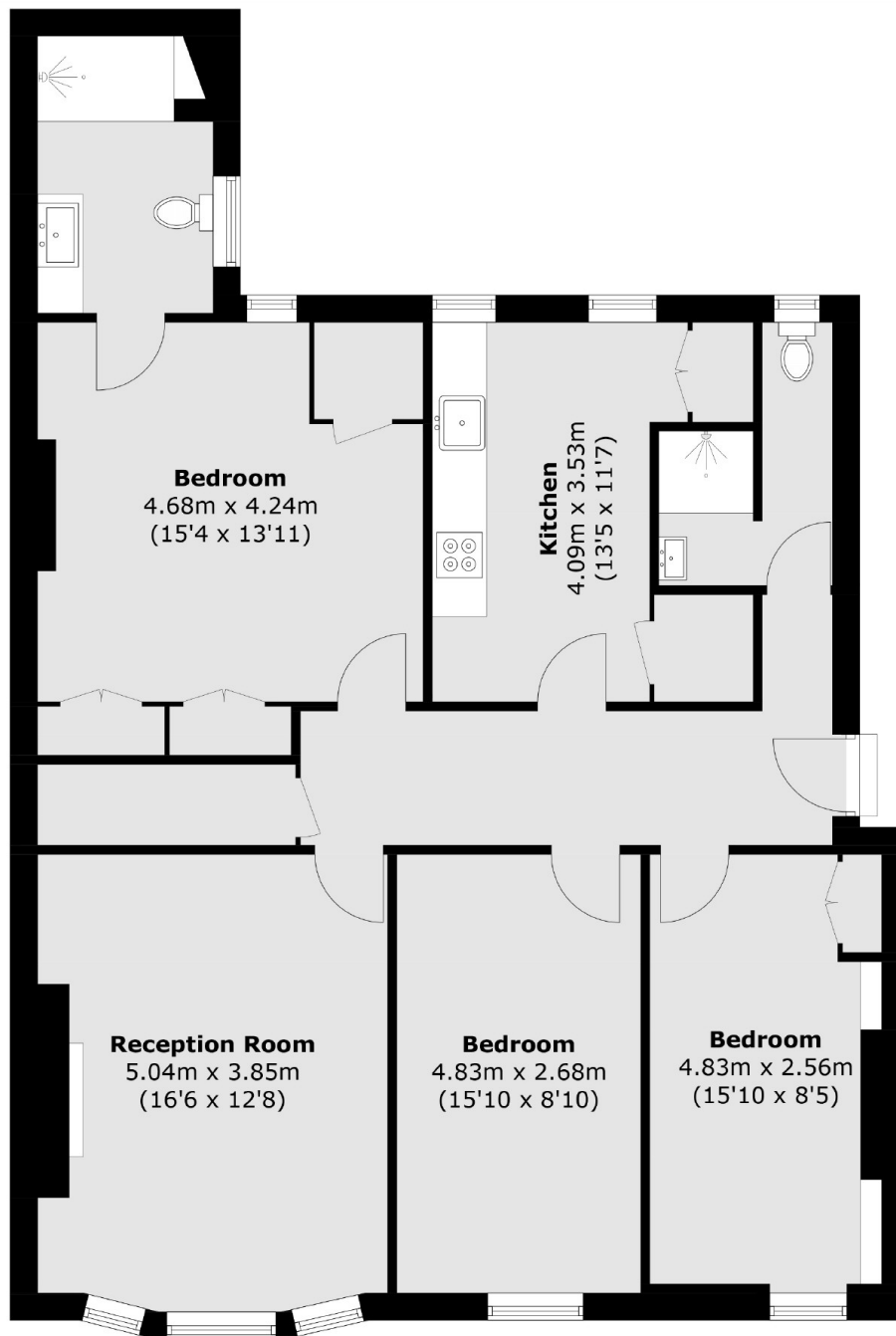
Great Portland Street is located approximately 0.2 miles away from Great Portland Street Underground Station.

Features

- Three Bedrooms
- Two Bathrooms
- Second Floor
- Feature Fireplace
- Heart Of Fitzrovia
- Natural Light



Great Portland Street, London, W1W



Second Floor

Total area (approx.): 101.8 sq. m (1,095.6 sq. ft)