



Cleveland Street, W1T

£461 Per week

An exceptionally spacious and sunny first floor studio apartment on this popular and sought after street in the heart of Fitzrovia and close to Fitzroy Square.

Cleveland Street is located just south of Fitzroy Square and is less than half a mile from Warren Street and Great Portland Street. There is a wide variety of shops and restaurants available on nearby Tottenham Court Road and Goodge Street.

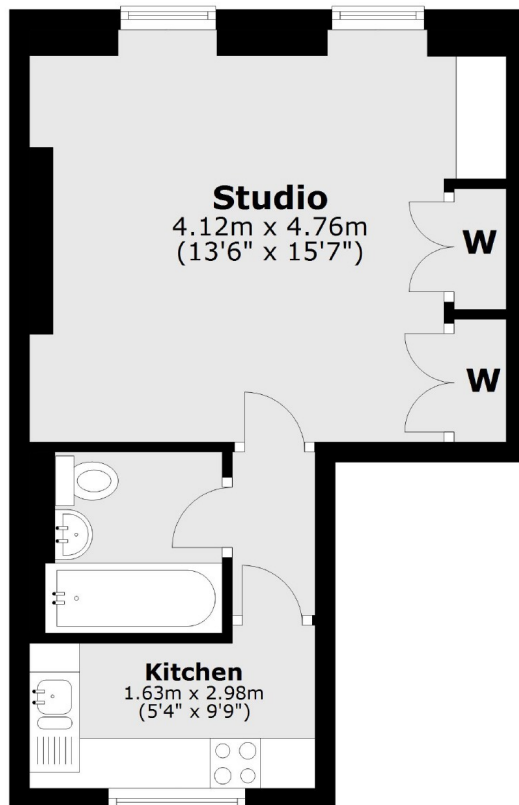
Features

- Spacious Living Area
- Central Location
- Wood Floors
- High Ceilings
- First Floor
- Separate Kitchen

Cleveland Street, London, W1T

First Floor

Approx. 29.5 sq. metres (317.6 sq. feet)



Total area: approx. 29.5 sq. metres (317.6 sq. feet)