



Rathbone Place, W1T

£2,595,000

Dexters



Rathbone Place, W1T

A spacious three bedroom apartment with a terrace situated in Rathbone Square. Located in the fashionable area of Fitzrovia. Charlotte Street, with its range of world class restaurants, Oxford Street and the West End are within close proximity.

Residents of Rathbone Square are greeted by a concierge team who are on site 24 hours. There is an excellent range of facilities including a swimming pool, sauna and steam room, gym and cinema.

This modern third floor apartment benefits from a superb specification with an open plan kitchen/reception room, principal bedroom with en suite dressing room and bath/shower room, two further bedrooms both with access to the terrace and a further shower room.

The transport links are excellent from nearby stations, Tottenham Court Road (approximately 0.2 miles) with the future Elizabeth Line which will provide fast direct links to London Heathrow and the City, Oxford Circus (approximately 0.5 miles). Main line stations Euston (approximately 0.7 miles) and Kings Cross St Pancras (approximately 1.5 miles).

Features

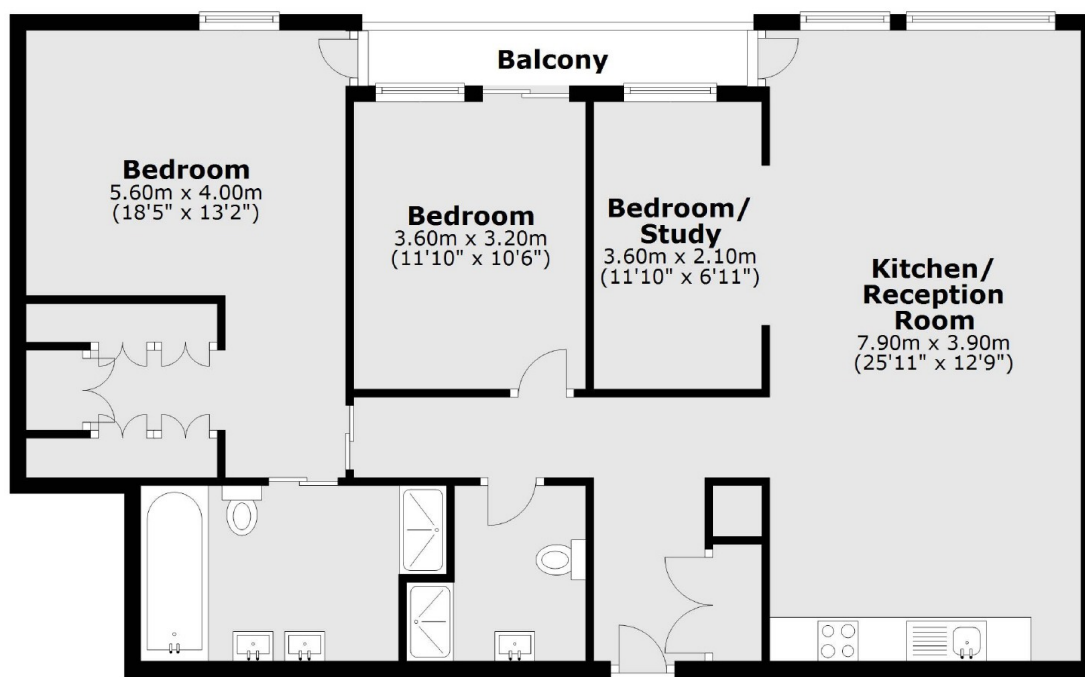
- Private Terrace
- Concierge 24 hour
- Residents Pool, Gym, Cinema
- Lease 999 from 2018
- Lift







Rathbone Place, London, W1T



Dexters

Fitzrovia & Covent Garden
66 Goodge Street
London
W1T 4NG
Sales
020 7067 2401

Energy Rating: B. We aim to make our particulars both accurate and reliable. However they are not guaranteed; nor do they form part of an offer or contract. If you require clarification on any points then please contact us, especially if you're traveling some distance to view. Please note that appliances and heating systems have not been tested and therefore no warranties can be given as to their good working order.

 **RICS** | Regulated
Estate Agent
and Letting Agent

[dexters.co.uk](https://www.dexters.co.uk)