



Marshall Street, W1F

£2,238 Per week

Dexters



Marshall Street, W1F

This impressive 'New York loft style' apartment in West Soho has three bedrooms, three bathrooms and features direct lift access and wooden floors. The apartment is located in sought-after development located in the heart of Fitzrovia. The flat has an ample storage space and has been furnished in line with the latest trends in interior design.

Perfectly located in the highly desirable Fitzrovia neighborhood, this apartment is part of a sought-after development that places you at the heart of one of London's most exciting areas. The interior has been thoughtfully designed and furnished to reflect the latest trends in contemporary design, offering a blend of style, comfort, and functionality. In addition, the apartment provides ample storage space, ensuring that residents can keep their belongings organised and easily accessible.

Regent Lofts is located just off Regent Street bordering Mayfair and Soho in the heart of London's West End, offering a variety of; shops, restaurants and bars. Carnaby Street and Piccadilly Circus are close by.

Features

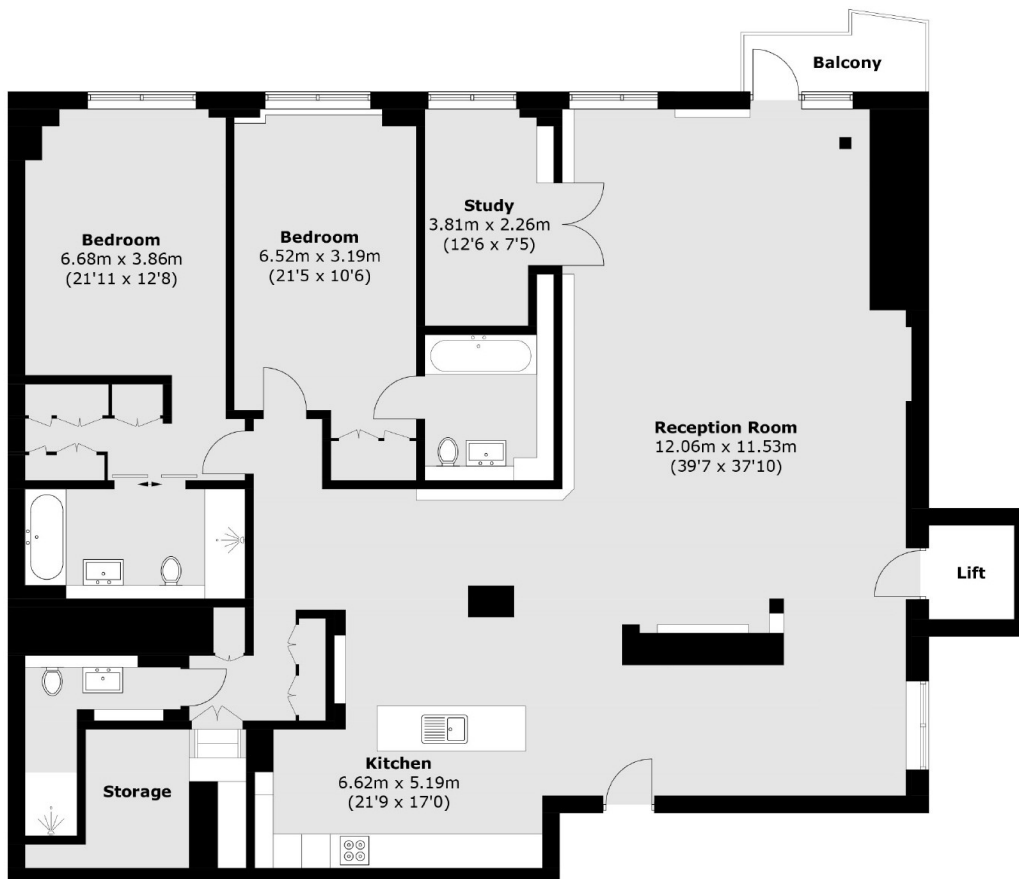
- Three Bedrooms
- Direct Lift Access
- Over 2000 sq ft
- Loft Style Apartment
- 24 Hour Concierge
- Private Gated Development







Marshall Street, London, W1F



Fourth Floor

Total area (approx.): 199.0 sq. m (2,142.0 sq. ft)
(Excluding Lift)
Balcony: 3.6 sq. m (38.7 sq. ft)