

Cleveland Street, W1T

£775 Per week

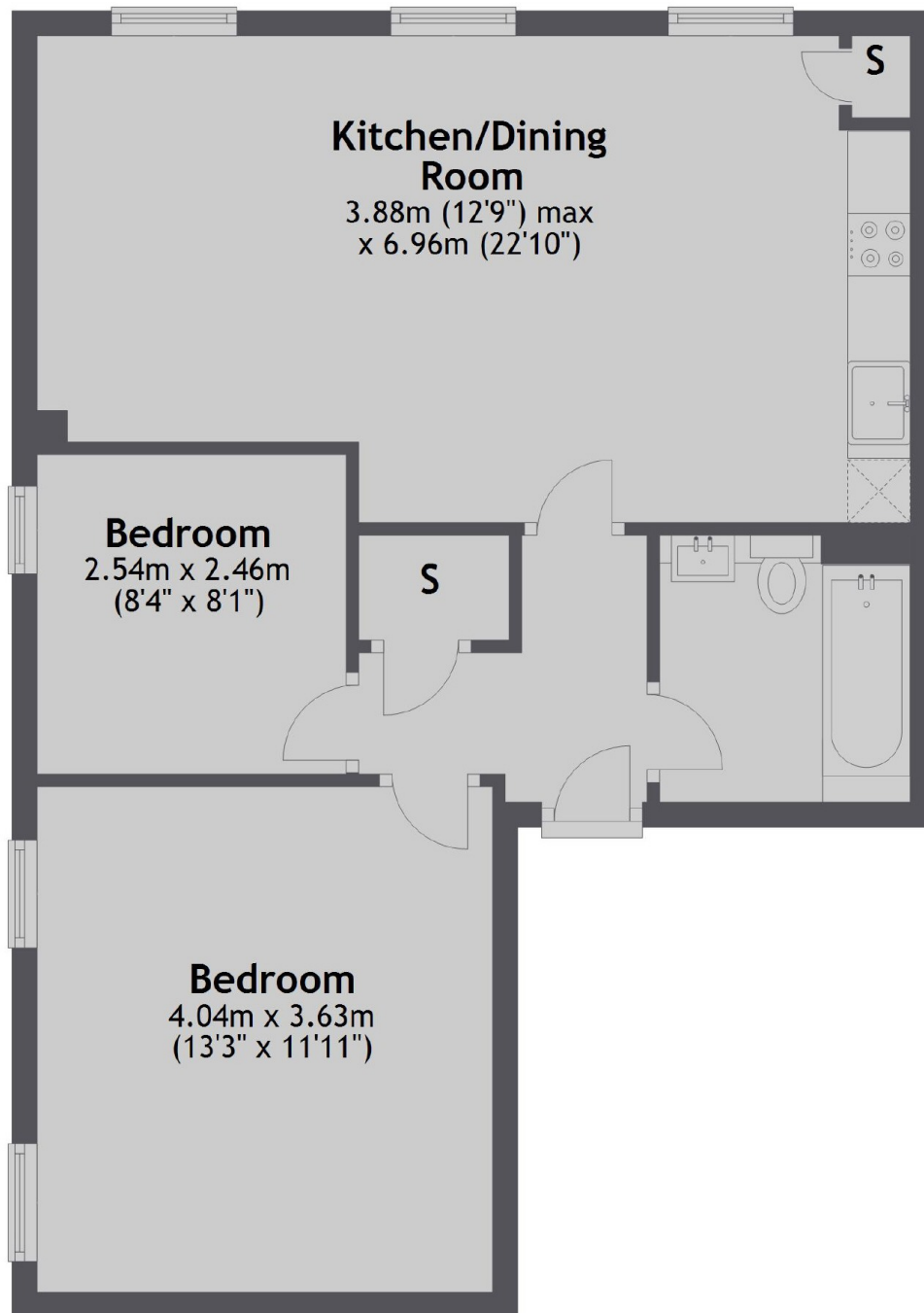
A modern newly refurbished two double bedroom apartment within a high-end converted public house. The property has an excellent finish throughout and is located by Fitzroy Square.

Cleveland Street is located just south of Fitzroy Square and is less than half a mile from Warren Street (Northern and Victoria) and Great Portland Street (Circle, Hammersmith & City and Metropolitan) underground stations.

Features

Newly Refurbished
Converted Public House
Two Bedroom
Wooden Floors
Lift Access
West Facing Living Room

Cleveland Street, London, W1T



Total area: approx. 56.7 sq. metres (610.3 sq. feet)