



Riding House Street, W1W

£650 Per week

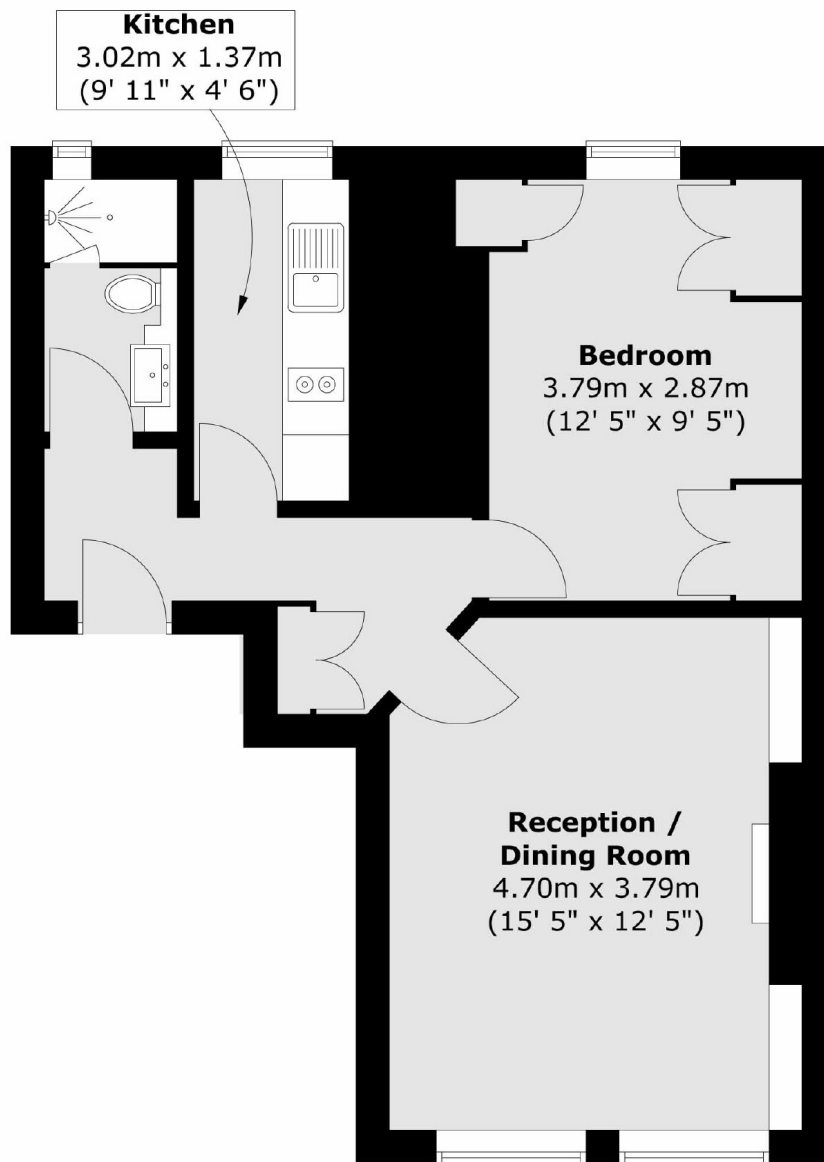
This one bedroom apartment is conveniently located in well-preserved periodic building moments away from Oxford Street. The property has wooden floors throughout the apartment and good natural lighting. The apartment offers fully fitted separate kitchen.

Low proximity to Oxford Circus, Tottenham Court Road and Great Portland Street train stations, minutes away from coffee shops and restaurants in the area.

Features

- Central Location
- Wooden Floors
- Fully Furnished
- Great Storage
- Natural Light
- Modern

Riding House Street, London, W1W



Total area (approx.) : 46.5 sq. m (500 sq. ft)