



**Great Titchfield Street, W1W**

**£1,550** Per week

**Dexters**



## Great Titchfield Street, W1W

This unique warehouse conversion one bedroom apartment is situated on the second floor of newly renovated former Printing House in the heart of Fitzrovia. The apartment has wooden oak floors throughout and spacious open plan kitchen/reception area.

This former Printing and Publishing House has been meticulously designed throughout and retains many original period features such as the exposed brickwork and Crittal windows. There is solid oak floors throughout with underfloor heating and the carefully considered fixtures and fittings further compliment its industrial heritage. The spacious entrance hall leads to an east facing living room with exposed brick work, high ceilings and open plan kitchen with Corian work surfaces and integrated 'Siemens' appliances. At the rear of the property the master bedroom also has exposed brickwork, oak floors with under floor heating, bespoke wardrobes and en suite bathroom.

Great Titchfield Street is conveniently and centrally located within half a mile of the world famous Oxford Street.

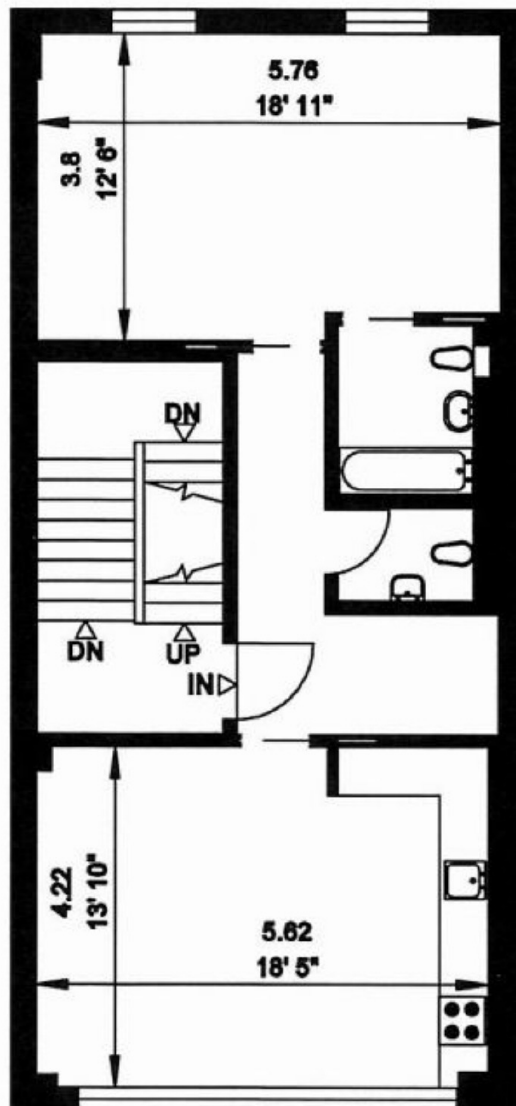
### Features

- Warehouse Conversion
- One Bedroom
- Modern Design
- Solid Oak Floors
- Second Floor
- Spacious





# Great Titchfield Street, London, W1W



## SECOND FLOOR

### FLAT 2

Gross Internal Area =  
61 sq. metres  
662 sq. feet