



Newman Street, W1T

£796 Per week

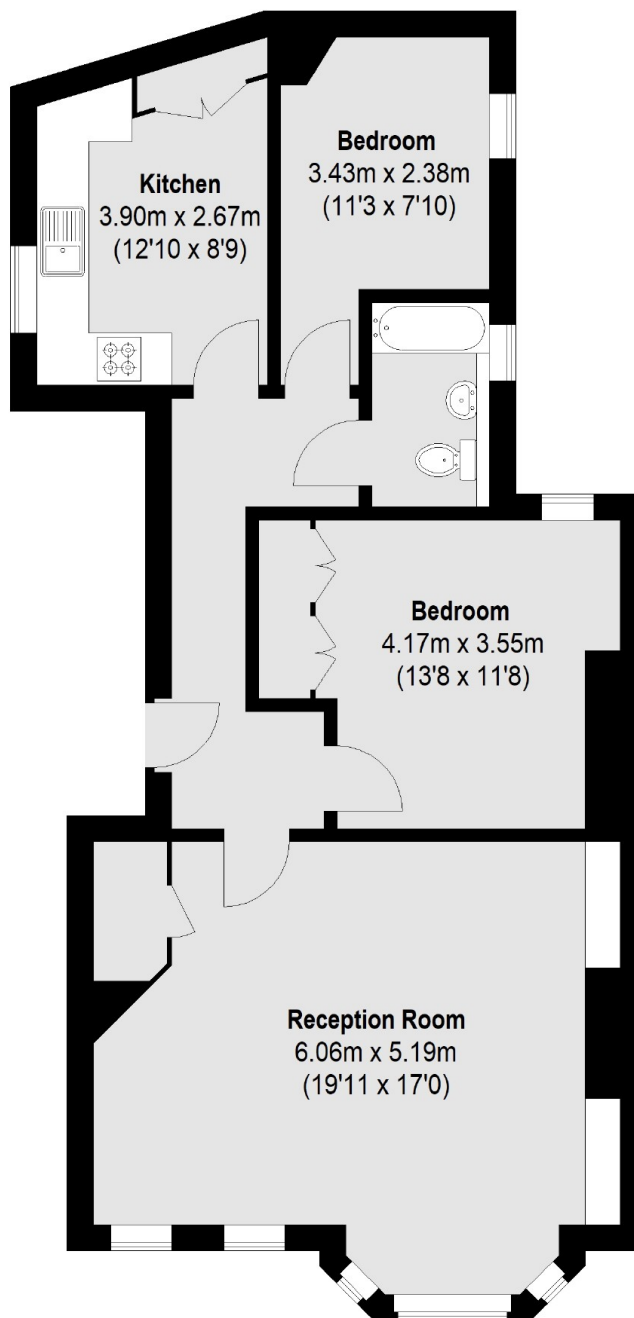
This sophisticated apartment is located in the heart of Fitzrovia. It features stylish furnishings, including a reception room with dining space, a modern fully-equipped kitchen with a breakfast bar, and two bedrooms with ample storage.

Newman Street runs north of Oxford Street and up to Goodge Street, making it an ideal location for those who want to be right in the heart of it West End.

Features

- Two Bedrooms
- Second Floor
- Lift Access
- Roof Terrace
- Wooden Floors
- Central Location

Newman Street, London, W1T



Second Floor

Total area (approx.): 73.0 sq. m (786 Sq. ft)