



## Parker Street, WC2B

£923 Per week

This luxury one-bedroom apartment, set within a charming Victorian building in the heart of Covent Garden, features a private balcony and elegant interiors. The property boasts a bright, open-plan living space with a fully fitted kitchen, a spacious double bedroom with built-in wardrobes, and a sleek, modern bathroom. Residents enjoy exclusive amenities, including concierge service, lift access, and a private gym.

Chapter House is surrounded by some of London's finest restaurants, bars, cafés, boutiques, galleries, and museums, along with world-renowned theatre, opera, and ballet, all just a short walk away. Ideally situated in a prime location, the property offers excellent transport links, with Holborn Station (0.2 miles Central and Piccadilly lines) and Tottenham Court Road Station (0.6 miles Northern, Central, and Elizabeth lines) within easy reach.

### Features

- Concierge
- Gym
- Great Location
- Open Plan Kitchen
- Lift Access
- Natural Light



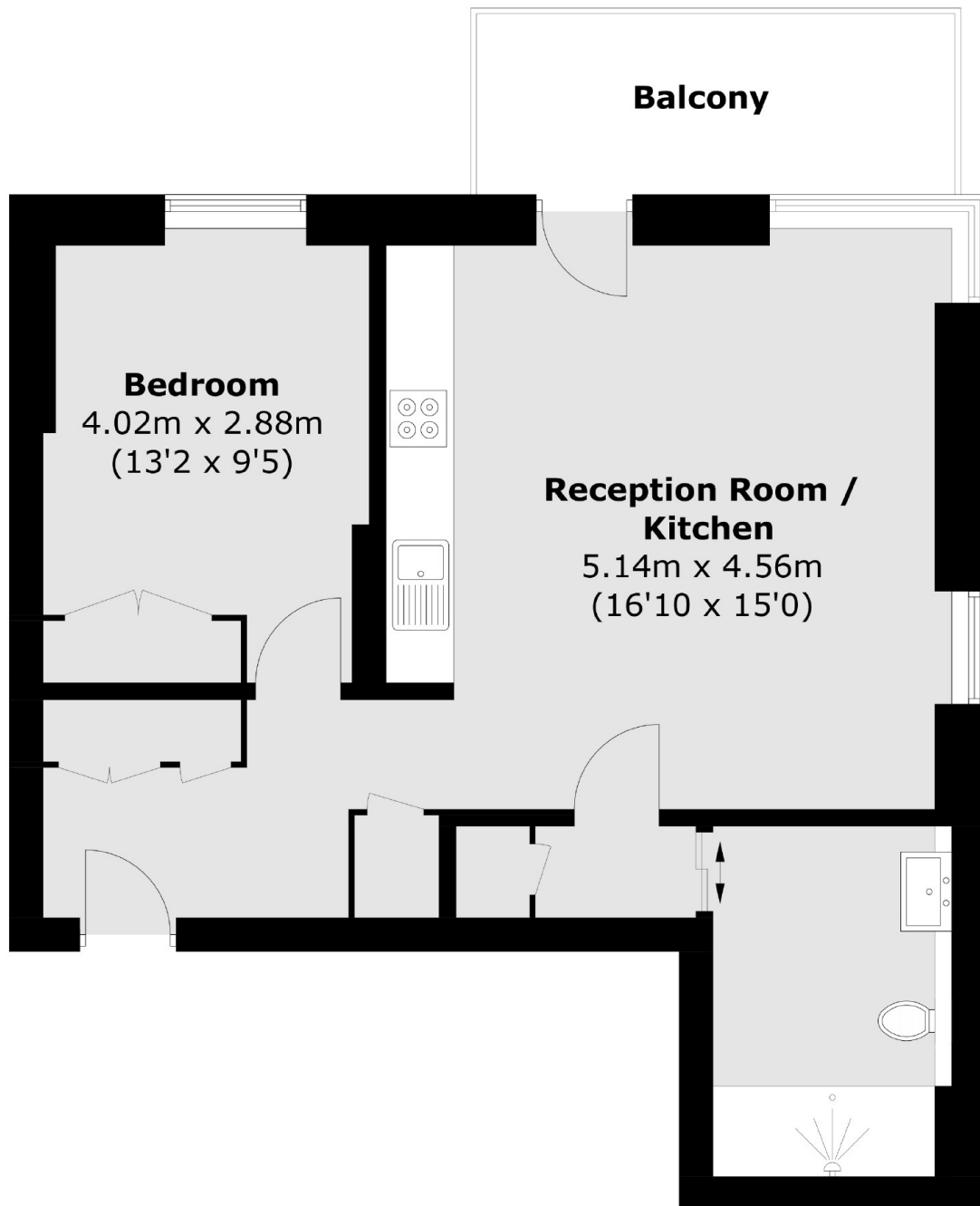


**Parker Street, WC2B**





# Parker Street, London, WC2B



## Second Floor

Total area (approx.): 54.1 sq. m (582.3 sq. ft)  
Balcony area (approx.): 6.8 sq. m (73.2 sq. ft)

# Dexters

Fitzrovia & Covent Garden  
66 Goodge Street  
London  
W1T 4NG  
Lettings  
020 7067 2402

Energy Rating: B. We aim to make our particulars both accurate and reliable. However they are not guaranteed; nor do they form part of an offer or contract. If you require clarification on any points then please contact us, especially if you're traveling some distance to view. Please note that appliances and heating systems have not been tested and therefore no warranties can be given as to their good working order.

 **RICS** | Regulated  
Estate Agent  
and Letting Agent

[dexters.co.uk](https://www.dexters.co.uk)