



Huntley Street, WC1E

£850,000

A two double bedroom, two bathroom apartment with a private balcony on the first floor of a residential building with a lift.

Located one block east of Tottenham Court Road. University College London and Goodge Street, Euston and Tottenham Court Road Stations are all accessible.

Features

- Two Double Bedrooms
- Two Bathrooms
- First Floor with Lift Access
- Day Porter
- Balcony
- Lease to 2143

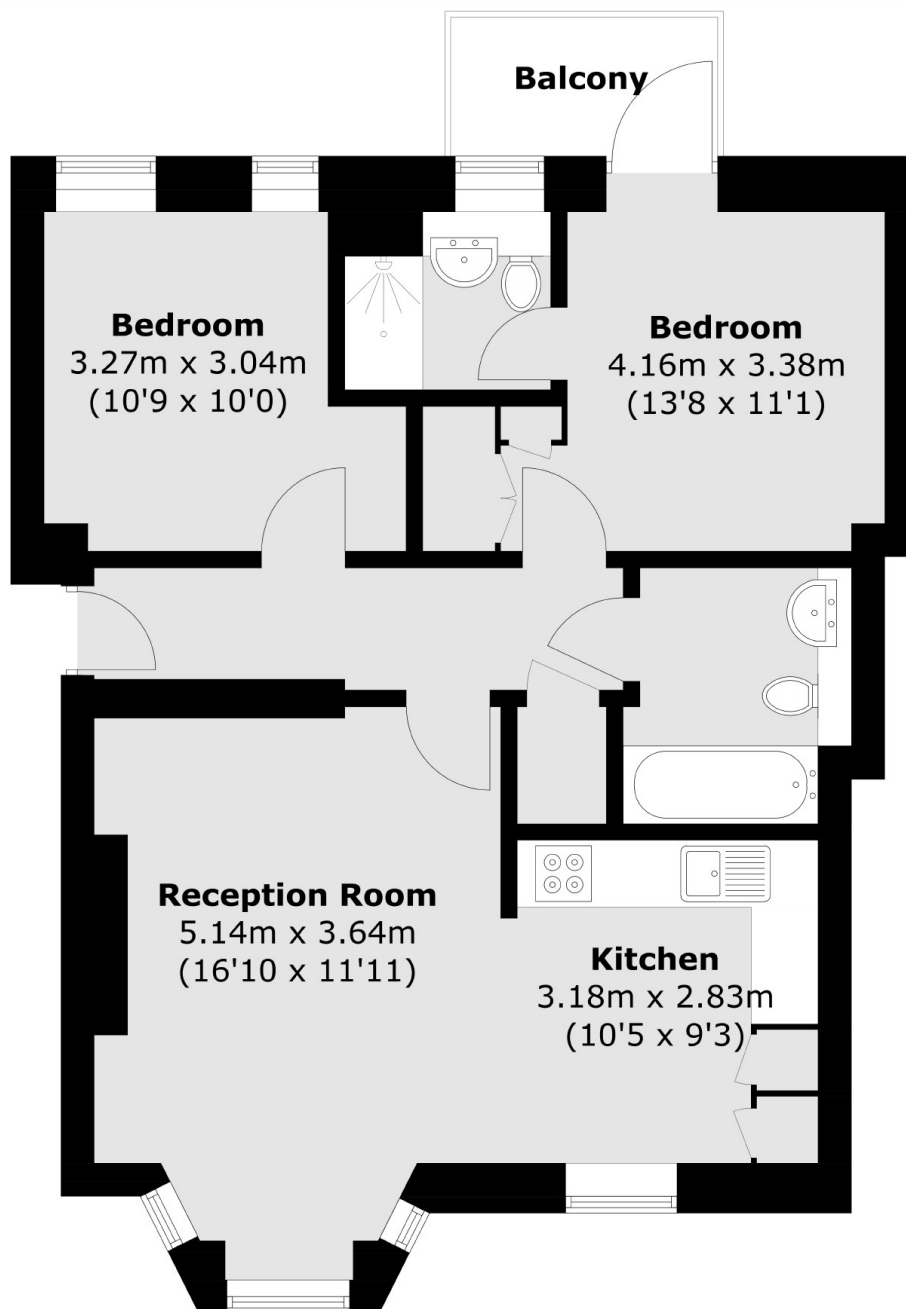


Huntley Street, WC1E

The modern property has a living-dining room with wood floors and open plan kitchen. The main bedroom has an en suite shower room and a balcony, there is a second double bedroom and a guest bathroom.



Huntley Street,
London, WC1E



First Floor

Total area (approx.): 62.2 sq. m (669.5 sq. ft)
Balcony (approx.): 3.0 sq. m (32.3 sq. ft)

Dexters

Marylebone
53-55 Weymouth Street
London
W1G 8NJ
Sales
020 7224 5544

Energy Rating: D. We aim to make our particulars both accurate and reliable. However they are not guaranteed; nor do they form part of an offer or contract. If you require clarification on any points then please contact us, especially if you're traveling some distance to view. Please note that appliances and heating systems have not been tested and therefore no warranties can be given as to their good working order.

 **RICS** | Regulated
Estate Agent
and Letting Agent

[dexters.co.uk](https://www.dexters.co.uk)