



Fareham Street, W1F

£807 Per week

This contemporary studio apartment is conveniently located in the heart of Oxford Street. The open-concept living area seamlessly integrates the living room, dining space, and well-appointed kitchen. The apartment also offers high ceilings with large insulated windows.

Located in the heart of London's sought-after West End district, Local amenities such as restaurants, bars, and nightlife of Soho as well as the amenities of neighbouring Fitzrovia, Covent Garden and Mayfair. Transport links include Oxford Circus underground station (Central, Victoria and Bakerloo lines) and Tottenham Court Road (Central, Northern and Elizabeth lines).

Features

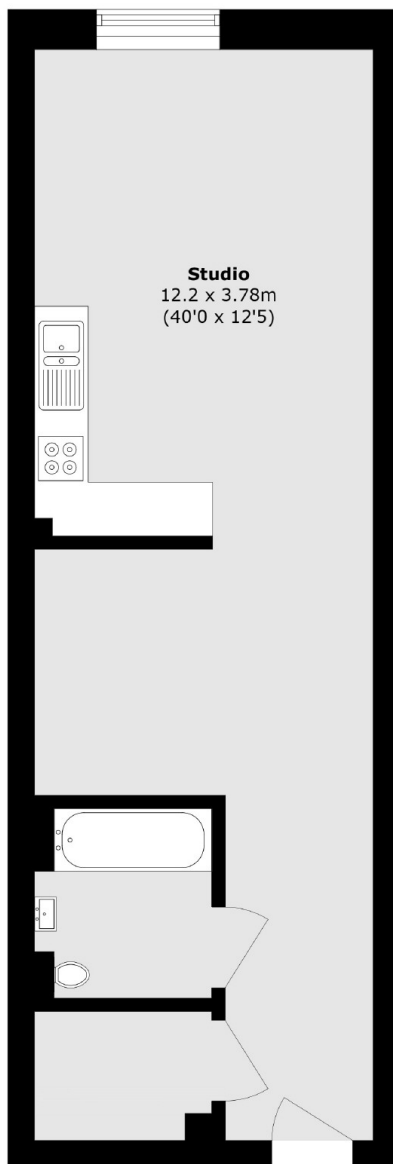
- Contemporary Style
- Central Location
- Ample Storage
- Open Plan
- Concierge
- Lift



Fareham Street, W1F



Fareham Street, London, W1F



Total area (approx.): 46.1 sq. m (496.2 sq. ft)