



## Huntley Street, WC1E

### £800,000

A beautifully presented two double bedroom share of freehold apartment in a sought after portered Edwardian mansion building located on the borders of Fitzrovia and Bloomsbury.

Local transport links include Tottenham Court Road (Including the Elizabeth Line with services to Heathrow), Euston and Kings Cross St Pancras.

### Features

- Two double bedrooms
- Reception
- Kitchen - Breakfast room
- Central Location
- Excellent decorative condition
- Porter
- Share of Freehold





## Huntley Street, WC1E

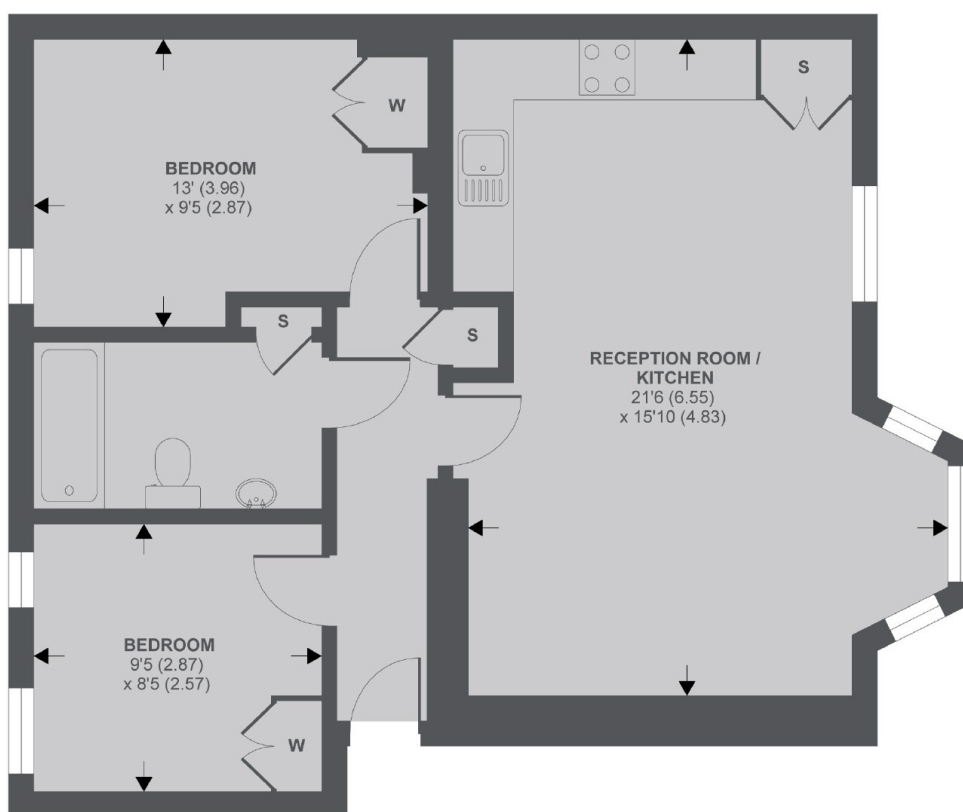
Located on a quiet residential street the bright lateral apartment has a modern decorative finish with wood floors and comprises of a sleek open plan fully integrated contemporary kitchen with adequate space to dine, this area is open to the reception room which provides superb living and entertaining space and has four street facing windows, to the rear of the property are two double bedrooms both with fitted storage and a large stylish bathroom.

The location is on the doorstep of the West Ends shopping, restaurants, theatres and nightlife. Immediately to the east you have the beautiful and peaceful Bloomsbury squares; south is the world famous Covent Garden and Soho for all your theatre and restaurant just to the south west; and to the north you've got the finest Royal park in London, Regents' Park with London Zoo. It also provides easy access to the local world-renowned Universities including UCL, SOAS & LSE.





# Huntley Street, London, WC1E



Lower Ground Floor

APPROX FLOOR AREA 636 SQ.FT 59. SQ.M  
Copyright nichecom.co.uk 2019 REF : 511470

## Dexters

Fitzrovia & Covent Garden  
66 Goodge Street  
London  
W1T 4NG  
Sales  
020 7067 2401

Energy Rating: C. We aim to make our particulars both accurate and reliable. However they are not guaranteed; nor do they form part of an offer or contract. If you require clarification on any points then please contact us, especially if you're traveling some distance to view. Please note that appliances and heating systems have not been tested and therefore no warranties can be given as to their good working order.

 **RICS** | Regulated  
Estate Agent  
and Letting Agent

dexters.co.uk