



Goodge Street, W1T

£1,500 Per week

Dexters



Goodge Street, W1T

An exquisitely designed apartment with an abundance of natural light that has been furnished to very high standards. The property consists of a main bedroom with an en suite bathroom that includes a walk-in shower and a bathtub, a kitchen/dining space that opens to the open reception area and a second double bedroom with a bathroom. In addition, the house has a lift, air conditioning, and concierge service.

The building benefits from a day concierge and is located in the Central London area of Fitzrovia, on the borders of Bloomsbury and moments from the bustling Oxford Street and tranquil Regent's Park.

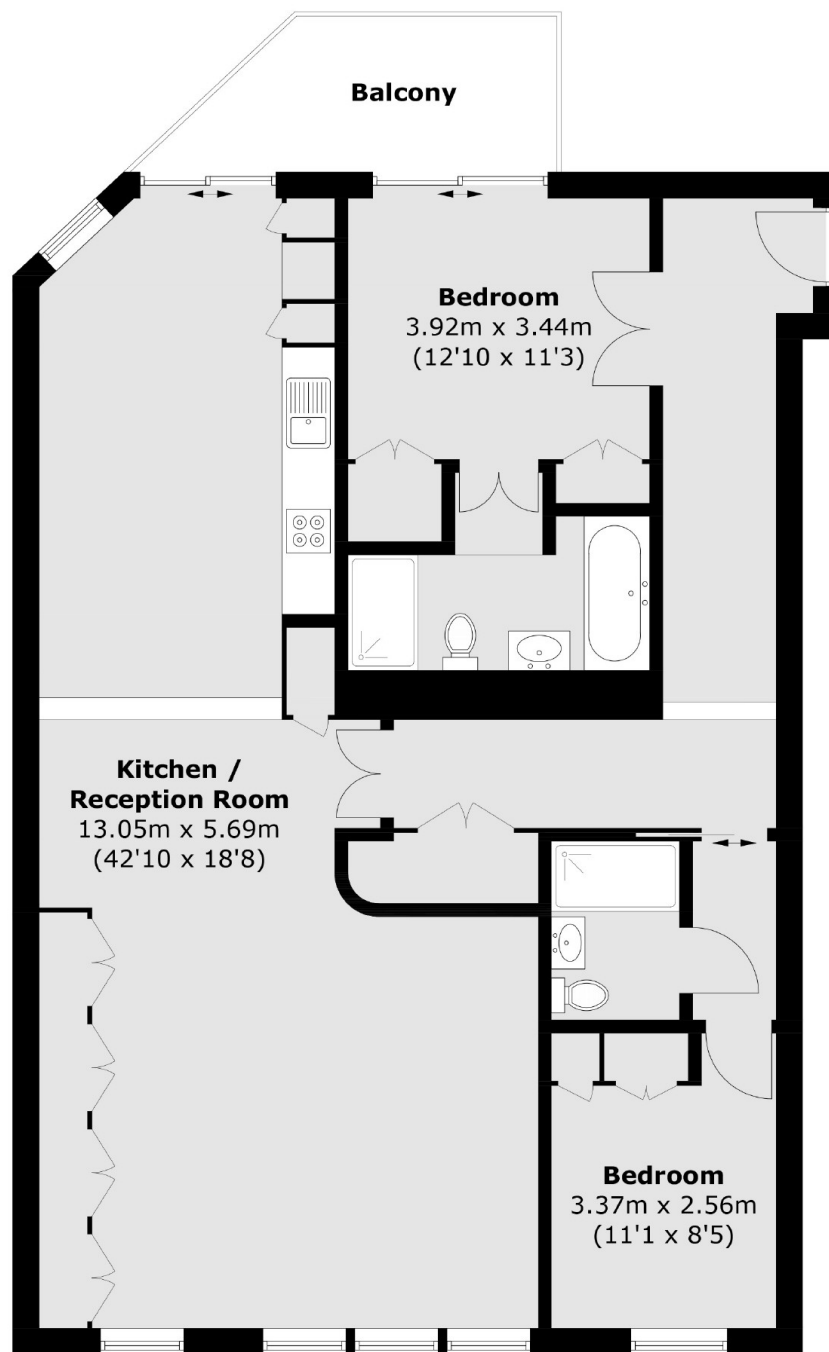
Local Stations are Goodge Street and Tottenham Court Road with Central, Northern and the future Elizabeth Line which will provide fast links to The City and London Heathrow Airport.

Features

- Two Bedroom
- Furnished
- Air Conditioning
- Concierge
- Balcony
- Modern



Goodge Street, London, W1T



Total area (approx.): 109.0 sq. m (1,173.3 sq. ft)
Balcony: 7.0 sq. m (75.3 sq. ft)

Dexters

Fitzrovia & Covent Garden
66 Goodge Street
London
W1T 4NG
Lettings
020 7067 2402

Energy Rating: B. We aim to make our particulars both accurate and reliable. However they are not guaranteed; nor do they form part of an offer or contract. If you require clarification on any points then please contact us, especially if you're traveling some distance to view. Please note that appliances and heating systems have not been tested and therefore no warranties can be given as to their good working order.

 **RICS** | Regulated
Estate Agent
and Letting Agent

[dexters.co.uk](https://www.dexters.co.uk)