

Soho Lofts

Soho, W1D

Dexters



About the property

This exquisite one bedroom apartment is a warehouse conversion, where industrial charm meets contemporary elegance. The property has been newly refurbished with the highest Italian specifications such as Boffi, Porro, Subzero and Gaggenau with high ceilings and a sociable layout. The grand open plan reception dining room filled with the natural light and the warm tones of the extra-wide Danish Dinesen wooden floors create a relaxing area.

The exposed brick walls, floor-to-ceiling windows and the recessed lighting give the space a touch of industrial

style. The property also comes with cutting-edge Lutron lighting/electric blinds and an electromagnetic glass technology. With its ultra-modern design, abundant radiance of light, and spacious layout, this is the perfect canvas to create an urban sanctuary in the city.

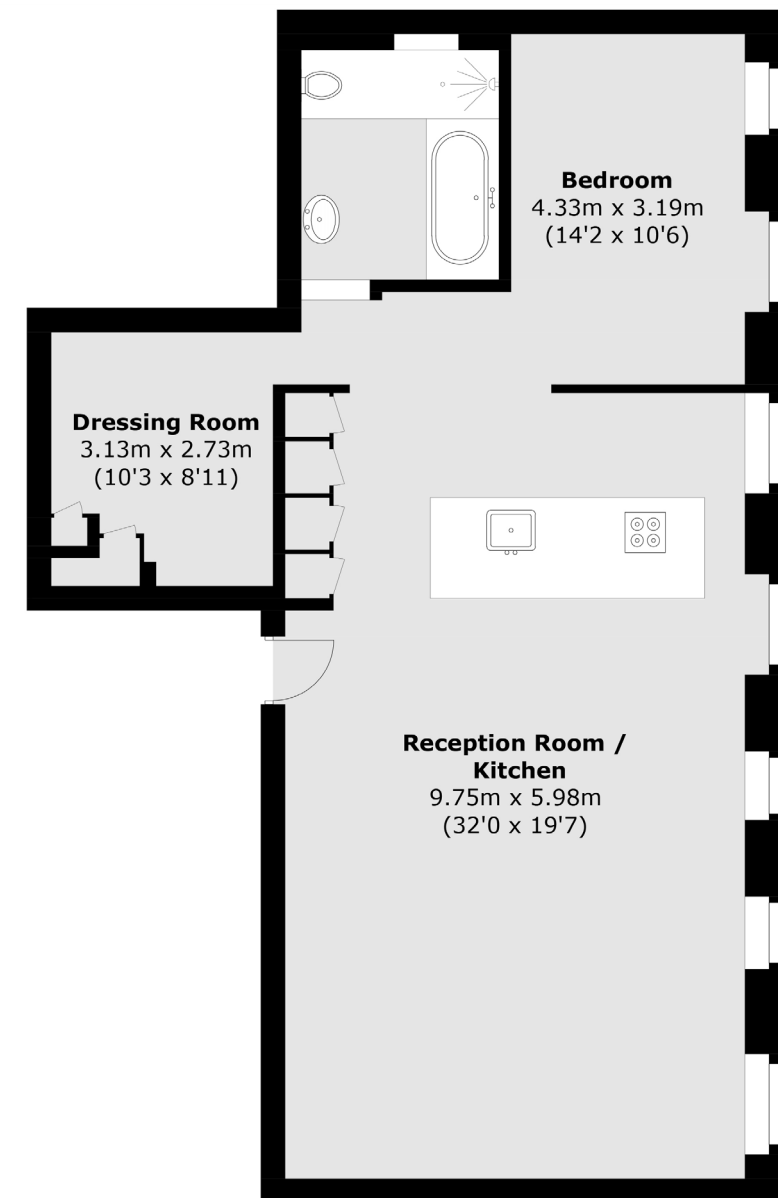
Soho Lofts building is a sought-after private residence to many creative/business professionals. Tucked away in a mews and attached to the Soho Hotel of the Firmdale luxury hotel group.

Key features

- Open Plan
- Porterage/Security Building
- Warehouse Conversion
- Central Location
- Spacious
- Lift







TOTAL APPROX. FLOOR AREA 1007.5 SQ. FT (93.6 SQ. M)

Energy Rating: C. We aim to make our particulars both accurate and reliable. However they are not guaranteed; nor do they form part of an offer or contract. If you require clarification on any points then please contact us, especially if you're traveling some distance to view. Please note that appliances and heating systems have not been tested and therefore no warranties can be given as to their good working order.



Dexters Fitzrovia & Covent Garden
66 Goodge Street,
London, W1T 4NG
020 7067 2402

Dexters