

Charlotte Street, W1T

£675 Per week

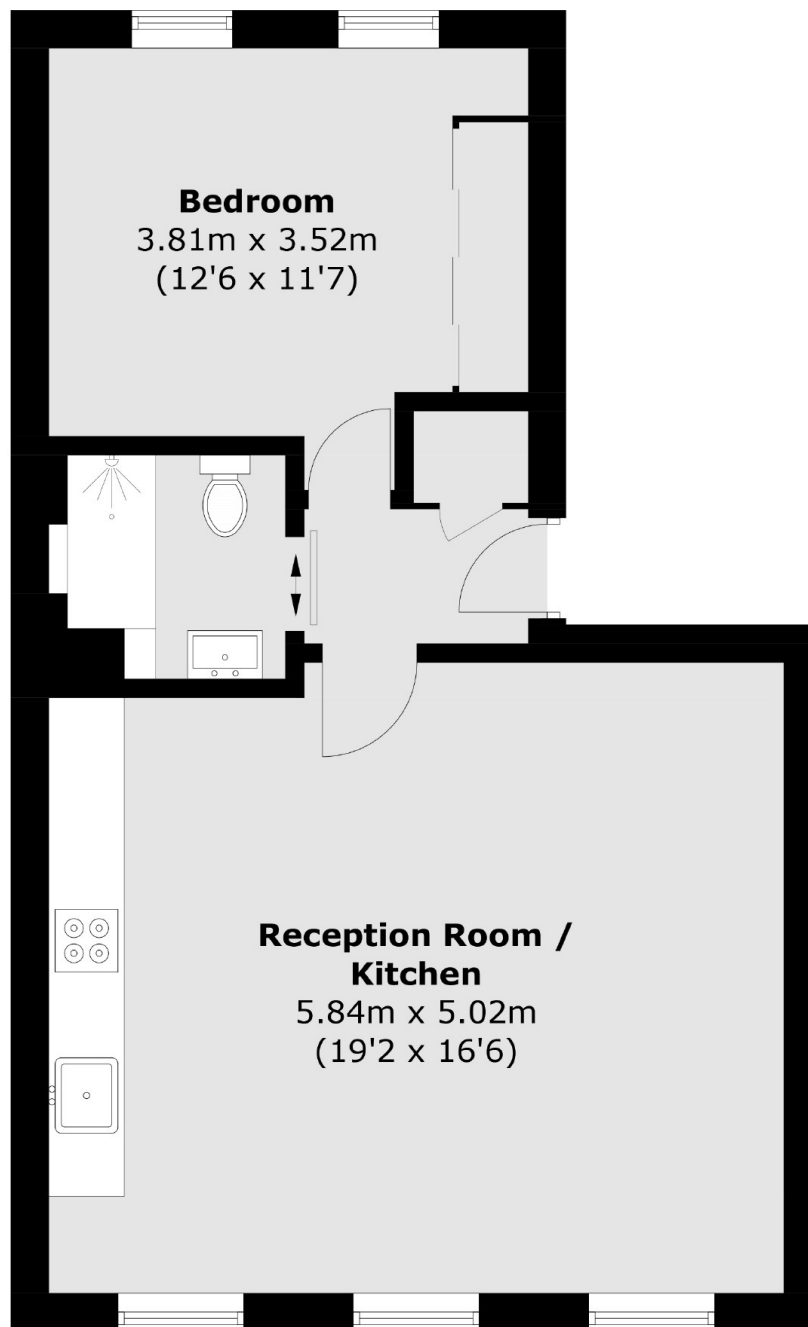
This exceptionally bright one bedroom apartment is conveniently located in the heart of Fitzrovia. The property has wooden floors throughout the apartment and an open plan kitchen/reception area.

Conveniently located in the centre of Fitzrovia, just moment away from coffee shops and restaurants on Goodge Street, with low proximity to Goodge Street and Tottenham Court Road train stations.

Features

- One Bedroom
- Central Location
- Wooden Floors
- Spacious
- Modern
- Bright

Charlotte Street, London, W1T



Second Floor

Total area (approx.): 48.1 sq. m (517.7 sq. ft)