



## Clipstone Street, W1W

£345,000

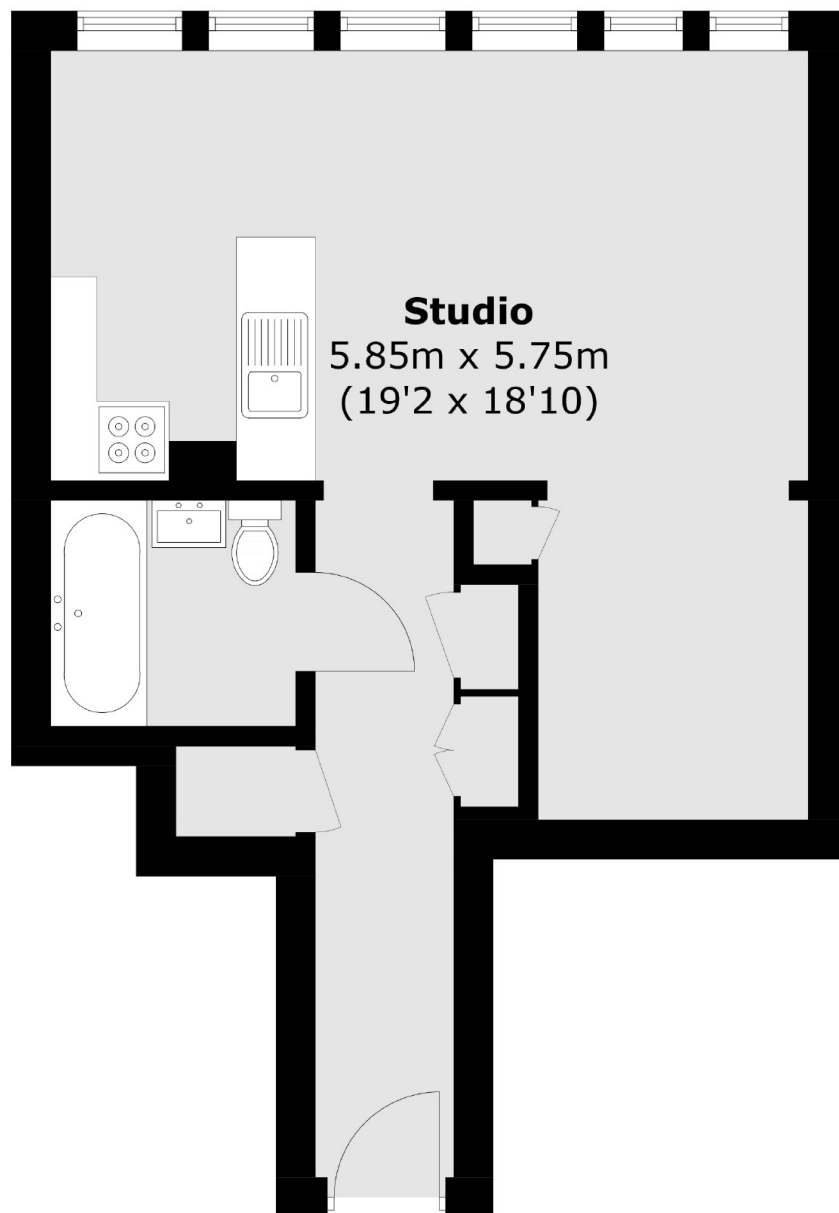
A studio apartment located on the top floor of an ex local authority building close to the colleges and universities of the area. The property requires updating and is offered chain free with a long lease.

Located conveniently for Stations at Great Portland Street, Goudge Street, Oxford Circus and London Euston.

### Features

Studio Apartment  
Top Floor  
Studio Room  
Bathroom  
Leasehold 100 years +

# Clipstone Street, London, W1W



## Fifth Floor

Total area (approx.): 36.1 sq. m (388.5 sq. ft)