



Oxendon Street, SW1Y

£4,250,000

A Grade II listed freehold house located in the heart of London's Theatreland. Arranged over six floors with the benefit of a large roof terrace.

The location affords residents access to the West End and St James's on foot. Transport links are at Charing Cross, Piccadilly Circus and Leicester Square.

Features

- Grade II Listing
- Freehold
- Five Bedrooms
- Drawing Room
- Kitchen - Dining Room
- Terrace



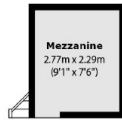
Oxendon Street, SW1Y

It is thought that a house has stood on the site since c 1673. The period style front was rebuilt in 1958 with a reset sundial dated 1679.

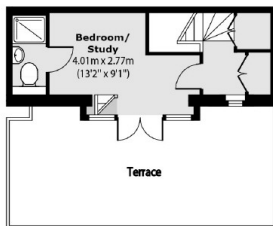
This fine home has period dimensions and sash windows allowing for plenty of natural light. The lower ground floor features one reception, one bedroom with en-suite bathroom and a utility room. The ground floor entrance lobby leads to the kitchen which can ably accommodate a large dining table. The first floor is occupied by a reception room which could be restructured to a formal drawing room. The upper floor houses the four further double bedrooms with three of them having access to en-suite bathrooms. Additionally a large private roof terrace overlooks the local skyline.



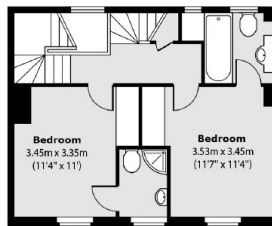
Oxendon Street, London, SW1Y



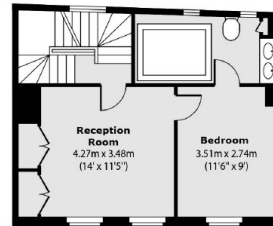
Mezzanine



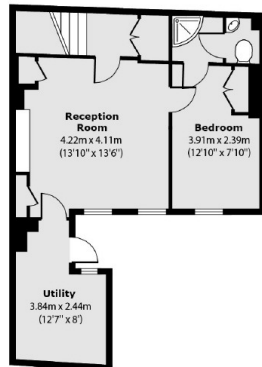
Fourth Floor



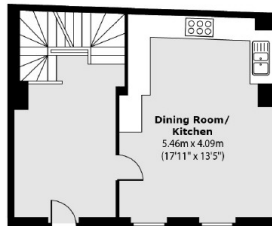
Third Floor



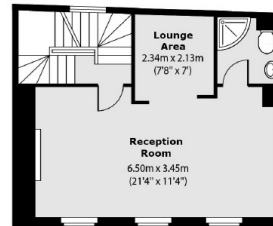
Second Floor



Lower Ground Floor



Ground Floor



First Floor

Total area (approx): 215.07 sq m (2315 sq. ft)
(Including Mezzanine)

Terrace total area (approx): 21.27 sq m (229 sq. ft)