



Cleveland Street, W1T

£2,300,000

Dexters



Cleveland Street, W1T

A three double bedroom, three bathroom sixth floor apartment. With an enviable south westerly dual aspect and a balcony. Located in modern development with residents lounge, garden, spa and gymnasium.

The apartment occupies a corner position within the building and enjoys a bright aspect. Internally there is a fully fitted Italian designed kitchen with Miele fitted appliances, Oak engineer timber chevron flooring with under floor heating and comfort cooling.

Located south of Regents Park. Accessible to the range of restaurants, world-class amenities and retail of London's West End. Fitzrovia and Marylebone are accessible on foot.

Features

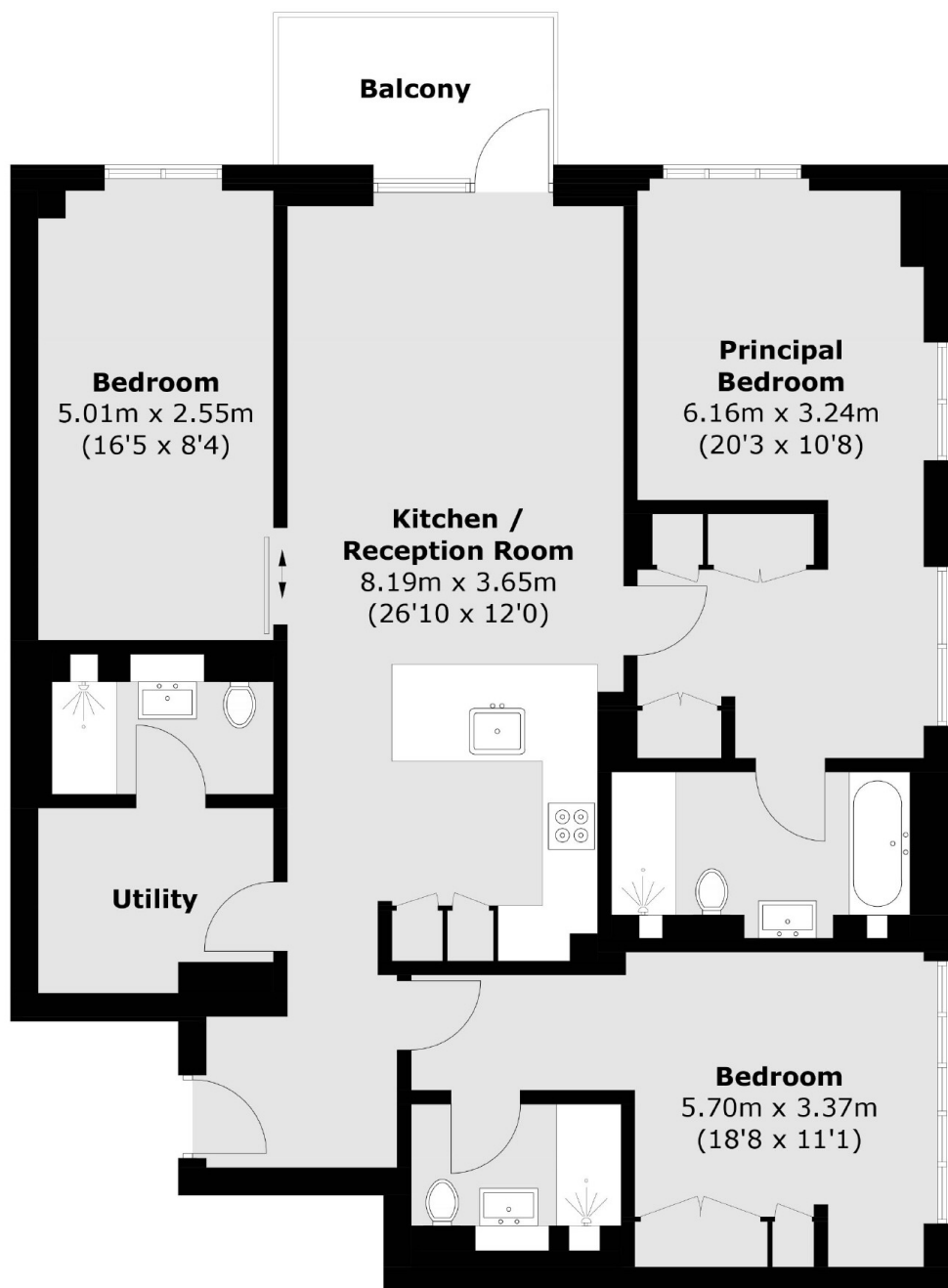
- Three Bedrooms
- Three Bathrooms
- Reception - Kitchen
- Two Lifts & 24 Hr Concierge
- Sixth Floor
- 250 year leasehold







Cleveland Street, London, W1T



Total area (approx.): 104.9 sq. m (1,129.1 sq. ft)
Balcony: 4.8 sq. m (51.7 sq. ft)