



Huntley Street, WC1E

£784 Per week

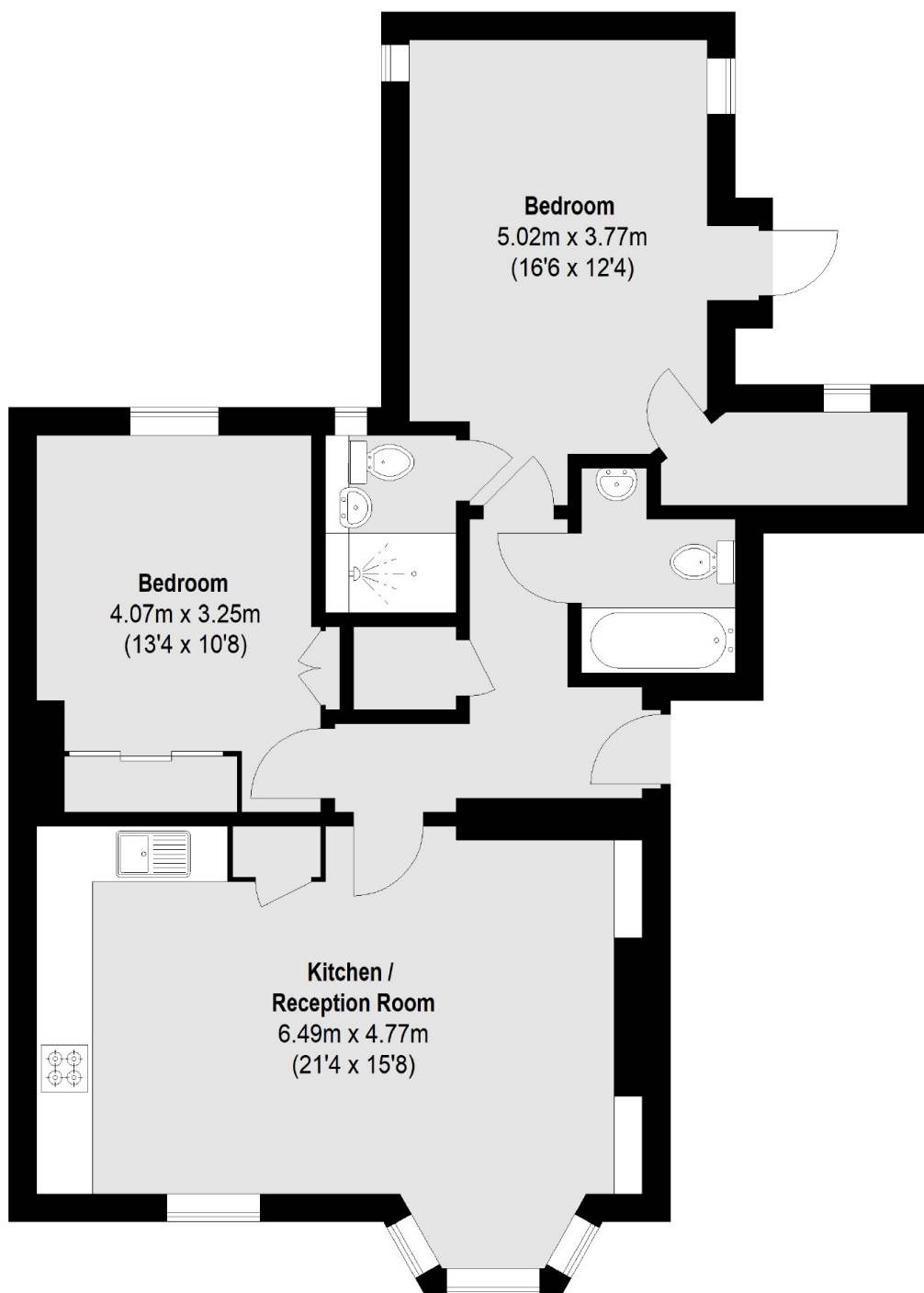
A stylish and spacious two double bedroom/two bathroom apartment with private terrace on the ground floor of this charming building, centrally located just behind Tottenham Court Road in Fitzrovia.

Huntley Street is located between Tottenham Court Road and Gower Street, less than half a mile to University College London and close to Euston and Tottenham Court Road Stations.

Features

- Off Street Parking
- Two Bedrooms
- Two Bathrooms
- Terrace
- Recently refurbished
- Wood floors

Huntley Street, London, WC1E



Total area (approx.): 72.90 sq. m (785 Sq. ft)