



Charlotte Place, W1T

£550,000

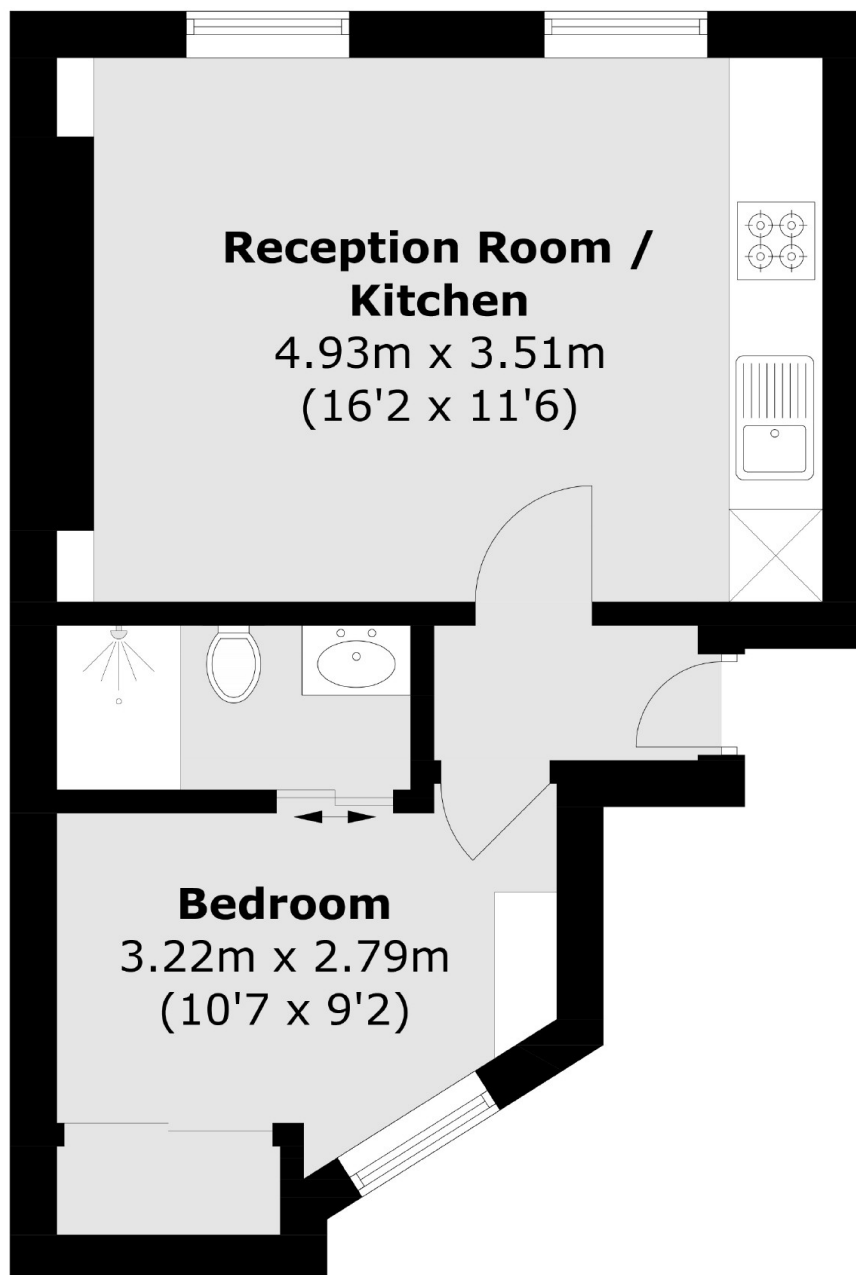
A one bedroom apartment situated on the top floor of a period building accessed from the pedestrianised Charlotte Place. The apartment has bright modern scheme and is sold chain free with a long lease.

Located moments from the restaurants of Charlotte Street and the transport and retail hub of Tottenham Court Road.

Features

- One Bedroom
- Modern Integrated Kitchen
- En Suite Shower Room
- Lease to 2173
- Chain Free
- Storage Loft Over Apartment

Charlotte Place, London, W1T



Total area (approx.): 30.0 sq. m (322.9 sq. ft)