



Marshall Street, W1F

£1,800 Per week

Dexters



Marshall Street, W1F

An exceptionally large three bedroom, two bathroom apartment on the fourth and fifth floor of this private gated development in the heart of Soho.

The property spans over 1500 sq ft, 24 hour concierge and has a balcony.

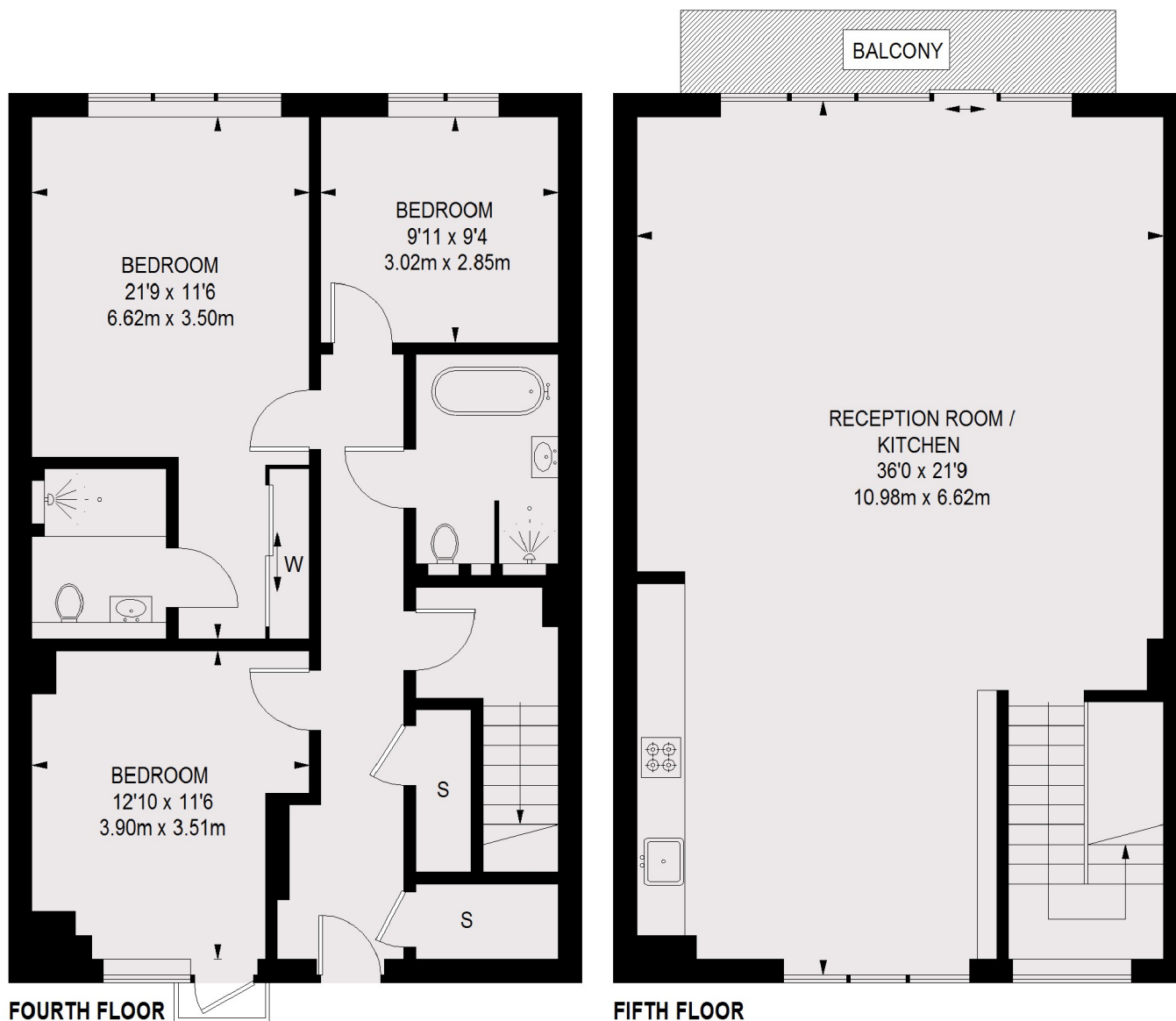
Regent Lofts is located just off Regent Street bordering Mayfair and Soho in the heart of London's West End, offering a variety of shops, restaurants and bars. Carnaby Street and Piccadilly Circus are close by.

Features

- Private Gated Development
- Over 1500 Sqft
- 24 Hour Concierge
- Three Bedrooms
- Balcony Access
- Central Location



Marshall Street, London, W1F



TOTAL APPROX. FLOOR AREA 1543 SQ. FT. (143.34 SQ. M.)
BALCONY = 62 SQ. FT. (5.77 SQ. M.)