



Chitty Street, W1T

£500,000

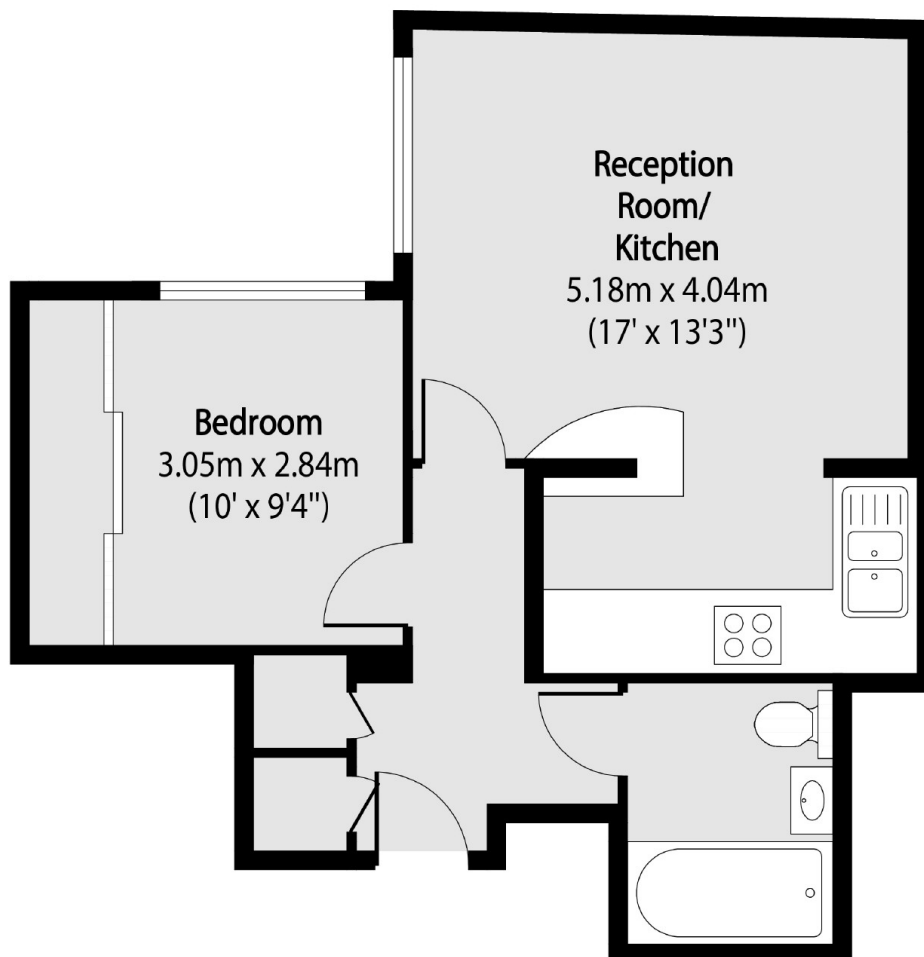
A bright top floor apartment located in a quiet location off Charlotte Street. Accessible to West End, UCL, LSE & SOAS. Benefits a long lease, lift and video entryphone.

Chitty Street is just off Charlotte Street and is well located for the many restaurants, bars and cafe's that Fitzrovia has to offer including Gauchos, Pied de Terre and the Charlotte Street Hotel.

Features

Offers in excess of £500,000
Passenger Lift - 4th Floor
Lease 150 years from 1986
Service charge: £2,587 pa
Ground rent: £100 pa
Council Tax: Camden band C

Chitty Street, London, W1T



Total area (approx): 37.90 sq m (408 sq. ft)