



## Hobhouse Court, SW1Y

£1,290 Per week

A luxurious three bedroom, three bathroom apartment on the third floor of the gated brand new Hobhouse Court development with balcony off the master bedroom and wrap around terrace off the living room.

Hobhouse is located less than 50 meters from Trafalgar Square between St James's, Mayfair, Soho, Covent Garden, Leicester Square and Trafalgar Square and St James's Park nearby to Leicester Square Station as well as Piccadilly Circus and Charing Cross Station.

### Features

- Unrivalled location
- Separate Storage Unit
- Bicycle Storage
- Comfort Cooling
- Concierge
- Gated Development

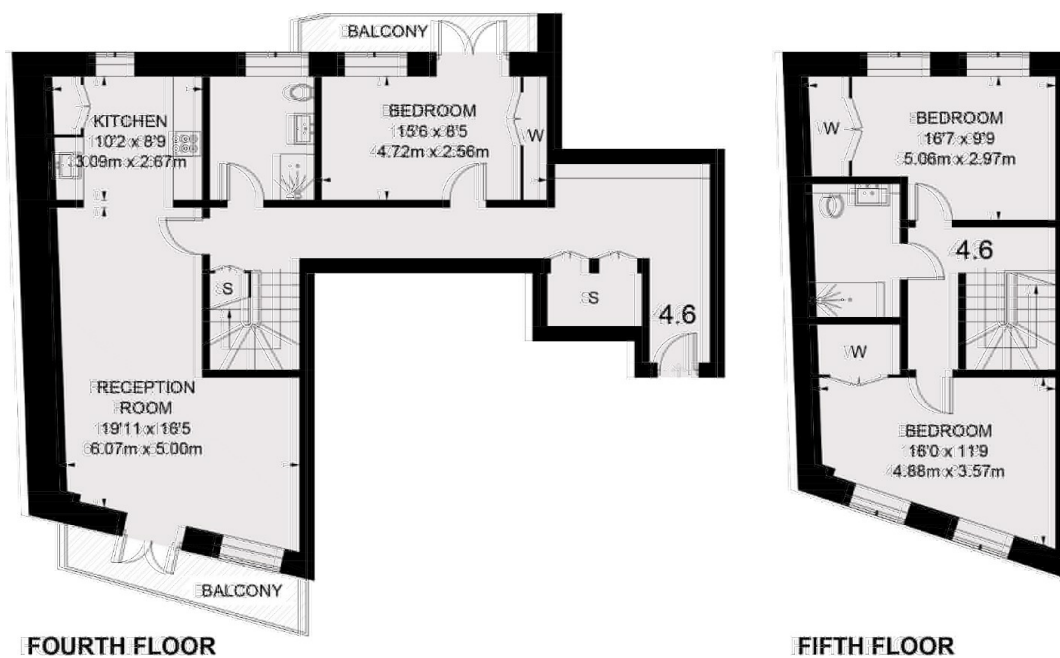


## Hobhouse Court, SW1Y

The development is designed by Arquitectonica and comes with on site porter, air conditioning, communal courtyard, storage units and bicycle storage in an unrivalled prestigious location.



# Hobhouse Court, London, SW1Y



TOTAL APPROX. FLOOR AREA 1317 SQ. FT. (122.3 SQ. M.)